



2020 > 2021

International Student Welcome Guide

TABLE OF CONTENTS

1▼

UNIVERSITÉ PARIS 1 PANTHÉON-SORBONNE

- P6 About the University
- P8 Key Figures

2▼

STUDY IN PARIS

- P12 **Administrative Procedures**
 - > Visas and residence permits
 - > Accommodation
 - > Health
 - > Banks
- P22 **Living in Paris**
 - > Budget
 - > Working in France
 - > Getting Around
 - > Going Out

3▼

UNIVERSITY LIFE

- P34 **Organisation of Studies**
- P36 **Becoming a Student at Paris 1
Panthéon-Sorbonne**
 - > Enrolment
 - > Orientation week
- P40 **Ressources**
 - > IT Services
 - > Libraries
- P45 **Societies and cultural activities**
 - > Clubs and Societies
 - > Cultural Activities
- P48 **Sports**
- P50 **Eating**

4▼

PRACTICAL INFORMATION

- P54 **University Calendar**
- P58 **Paris 1 Panthéon-Sorbonne
Study Centres**
- P60 **Acronyms**
- P62 **Contacts**
 - > International Relations
Department
 - > Paris 1 Panthéon-Sorbonne
 - > Emergency Numbers
- P63 **Check-lists**



1

UNIVERSITÉ PARIS 1 PANTHÉON-SORBONNE

P6 About the University

P8 Key Figures



1

ABOUT THE UNIVERSITY

Université Paris 1 Panthéon-Sorbonne was founded in the 13th century as the Collège de la Sorbonne by Robert de Sorbon and is located in the heart of the capital's Latin Quarter. It is one of the oldest French universities, renowned throughout the world. The present-day university has combined tradition with modernity since its establishment in 1970.



THREE MAJOR DISCIPLINARY AREAS

Paris 1 Panthéon-Sorbonne offers courses in three disciplinary areas: economics and management, arts and humanities and law and political science. This broad range of courses makes Paris 1 Panthéon-Sorbonne the biggest social science and humanities university in France in terms of both the range of courses on offer and student numbers.

Université Paris 1 Panthéon-Sorbonne has always emphasised interdisciplinary research. Today the university offers a number of innovative double degrees at both bachelor's and master's levels with excellent reputations in France and abroad.

RESEARCH EXCELLENCE

Teaching and research are intrinsically linked at Université Paris 1 Panthéon-Sorbonne. As with teaching, research is also structured around three major disciplinary areas with 36 research teams and 10 doctoral schools. One PhD viva takes place every day at the university. Every year, 60 titles are added to the university press catalogue, the *Editions de la Sorbonne*, and more than one scientific event is organised each day.

INTERNATIONAL OUTLOOK

More than 20% of the university's 43,700 students are international students enrolled across 10 academic departments and four institutes. Internationalisation of teaching and research at Paris 1 Panthéon-Sorbonne is constantly increasing thanks to strong historic links with a large number of global institutions (408 partners in 81 countries) and the university's involvement in a number of networks.

This strong international presence makes it possible for Université Paris 1 Panthéon-Sorbonne to offer provision for the international joint-supervision of PhDs, Erasmus Mundus programmes, joint degree programmes, and many delocalised degrees within foreign partner universities.

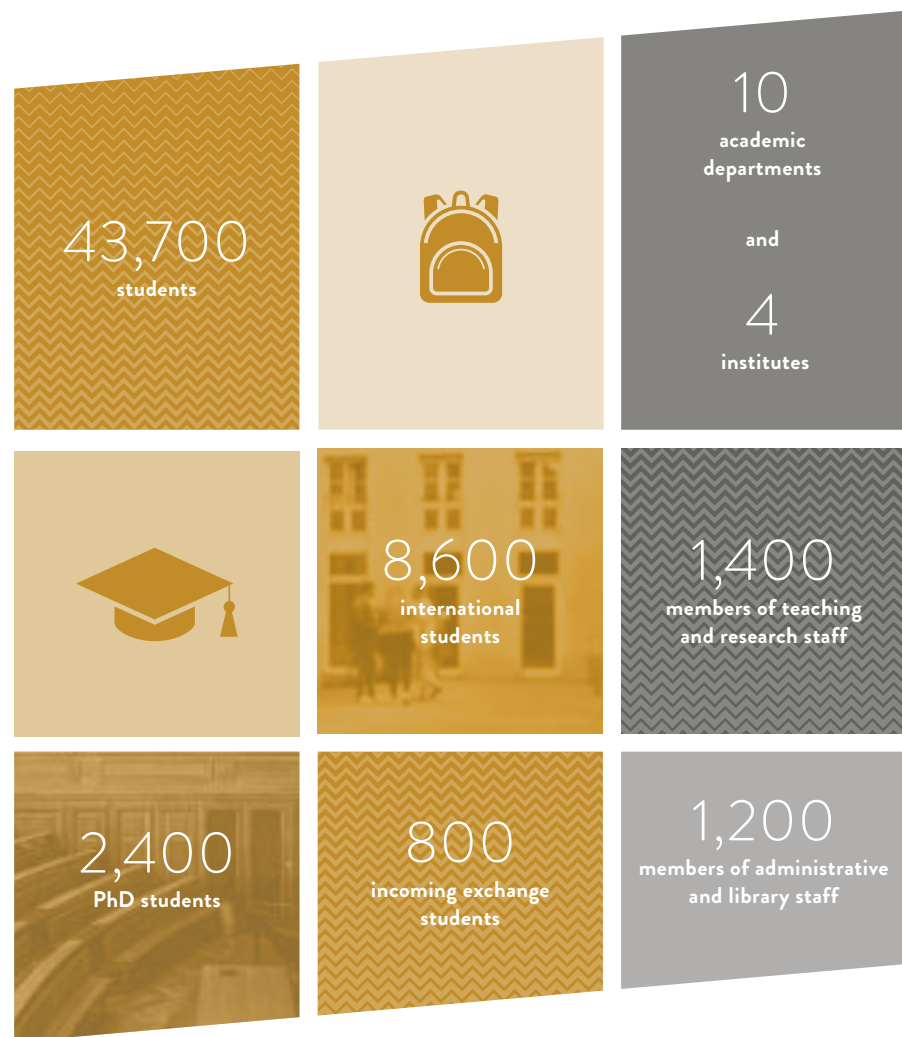
INTERNATIONAL REPUTATION

Université Paris 1 Panthéon-Sorbonne is very well placed in international rankings. In the 2020 QS World University Rankings by discipline the university was one of the best-classed in France, with seven departments placed in the top 50 for their discipline globally. At a national level, Paris 1 Panthéon-Sorbonne comes top in seven disciplines: anthropology, archaeology, architecture, law, development studies, geography and history.



1.

KEY FIGURES



2

STUDY IN PARIS

- P12** **Administrative Procedures**
- > Visas and residence permits
 - > Accommodation
 - > Health
 - > Banks

- P22** **Living in Paris**
- > Budget
 - > Working in France
 - > Getting Around
 - > Going Out



2

ADMINISTRATIVE PROCEDURES



VISAS AND RESIDENCE PERMITS

If you are not from one of the European Union member states; one of the European Free Trade Association countries (Iceland, Liechtenstein, Norway, Switzerland); Andorra; Monaco; San Marino or the Vatican City; then you must obtain a visa in order to come and study at the university. You must complete this procedure before your arrival in France.

THE DIFFERENT TYPES OF VISA FOR STUDYING IN FRANCE

Visas Valid for Three Months and Above (long-stay visas)

Long-stay visas valid as a residence permit for students, or VLS-TS student visas

allow you to study in France for a period of four months to a year. Upon expiry of this visa you must request a residence permit in order to stay in France.

Temporary long-stay visas (VLS-T)

allow you to study in France for a period of four to twelve months. This type of visa cannot be renewed.

Type D visas

with the following clause “residence permit must be requested within the first two months following arrival in France” apply only to Algerian nationals.

Visas Valid for Less than Three Months (short-stay visas)

Short-term visas for students sitting examinations

are only for non-European students and are only valid for travel in France. This visa allows you to come to France to sit a French higher education admission interview or entrance examination. If you are successful in this process you may request a student residence permit at the appropriate prefecture in France; you can do this without having to return to your country of residence upon presentation of your original short-stay visa. If you are unsuccessful you must leave France as soon as you know the outcome of your application. Please note that short-stay visas for students sitting examinations can only be awarded if the results of the selection process will be known within three months of candidates sitting entrance examinations and admissions interviews.

Short-term Schengen visas

are valid for a maximum of a 90-day period for use within the Schengen area. This can be either used for an uninterrupted period of 90 days or several

periods totaling 90 days. The holder is limited to remaining in the Schengen area no longer than 90 days within a 180-day period.

Short-term Schengen visas are valid for business or leisure purposes, which could include a short course, an internship or a paid position (providing the holder has obtained the right to work). Schengen single-entry visas are only valid for a single trip. Schengen single-entry and multiple-entry visas

allow you to travel around the Schengen area for a fixed period of six months to five years.

There are no formalities required upon arrival or departure when using this kind of visa. At the end of the 90-day period you must leave the Schengen area. The Schengen short-stay visa is renewable, however you must wait six months before submitting a new application. Unlike with a long-stay visa, this visa does not allow you to take up residence in France.

Visa Application Procedure

Before departing for France you must request a visa from the French consulate in your country of residence. You must present proof of university admission in France, proof of means and proof that you have accommodation reserved in France (*attestation d'hébergement*).

If you live in a country with an established “Études en France” procedure then you can apply for a visa through Campus France online in your area of residence.

FOLLOWING YOUR ARRIVAL IN FRANCE

Long-stay Visa Holders

If you hold a Long-Stay Visa Valid as a Residence Permit (VLS-TS)

if this is your first application, you have three months to take the necessary steps. You will have to validate your visa online by logging on administration-etrangers-en-france.interieur.gouv.fr.

Visa Certification Process

In order to validate your VLS-TS online, you will need a valid email address, the information on your visa, your date of arrival in France, your address in France and a payment card to pay the tax online.

If you do not have a payment card, you can buy an electronic stamp from a tobacco shop and pay in cash.

Once you have completed the online procedure, you will receive by email your login details to access your account and obtain confirmation of validation of your VLS-TS. A second email that can be downloaded will confirm the information that you filled in online.

If you hold a Temporary Long-Stay Visa or VLS-T

you do not need to get your visa certified at a prefecture when you arrive. You are not required to take any further steps in relation to your visa. VLS-T visas cannot be renewed and it is not possible to have this kind of visa extended. You must leave France when this visa expires.

Short-stay Visa Holders

If you are the holder of a short-term visa for students sitting examinations

and you obtain a place to study in France you can apply for a study residence permit at a prefecture without having to return to your country of residence. If you are unsuccessful, you must leave France as soon as the results of your examination/admission interview are published.

If you are the holder of a short-term Schengen visa

there are no formalities required upon arrival or departure. At the end of the 90-day period you must leave the Schengen area. The Schengen short-stay visa is renewable, however you must wait six months before submitting a new application. Unlike with a long-stay visa, this visa does not allow you to take up residence in France.

Keep in mind

Tourist visas cannot be converted to student visas or student residence permits in France or any European Union member state.

If you hold a Type D visa with the following clause: “residence permit must be requested within the first two months following arrival in France”

then you must imperatively apply for a residence permit at your local prefecture or through a dedicated service for this within your university no more than two months following your arrival in France.

Contact

titredesejouretudiant@univ-paris1.fr

Useful Websites

Campus France:

www.campusfrance.org/en/the-different-types-of-visas

France-Visas:

france-visas.gouv.fr/web/france-visas/accueil

ACCOMMODATION

Finding accommodation in the Île-de-France region is not an easy task and can take some time. It is recommended that you plan ahead as much as possible. Every student is responsible for finding their own accommodation and, if necessary, look for temporary housing for the start of the academic year.



Université Paris 1 Panthéon-Sorbonne has some accommodation units within university halls of residence that it allocates to exchange students. However, being accepted and enrolling at Université Paris 1 Panthéon-Sorbonne does not guarantee any student with an offer of university accommodation.

Université Paris 1 Panthéon-Sorbonne will not issue proof of accommodation documents in advance and requires you to complete all necessary consular processing procedures beforehand.

Université Paris 1 Panthéon-Sorbonne has accommodation available in several university halls of residence that you may wish to consider applying for. Unfortunately, the university does not have enough accommodation to meet all demand.

ACCOMMODATION RESERVED FOR FOREIGN STUDENTS ON EXCHANGE PROGRAMMES

The accommodation options below are exclusively available to foreign students taking part in exchange programmes.

This type of accommodation is allocated by the International Relations Department (DRI) at Université Paris 1 Panthéon-Sorbonne according to demand and availability.

Paris Crous

Every year Université Paris 1 Panthéon-Sorbonne has some Paris Crous accommodation for allocation. Rent is between €250-550/month depending on the type of accommodation.

Cité internationale universitaire de Paris (CiuP)

Université Paris 1 Panthéon-Sorbonne has several accommodation units available at the *Cité internationale universitaire de Paris* (CiuP). Rent is between €500-800/month depending on the type of accommodation. This accommodation is allocated exclusively to foreign students participating in a master's level exchange programme.

Please note that these two organisations may also charge a reservation fee.



ACCOMMODATION FOR ALL FOREIGN STUDENTS (EXCHANGE PROGRAMME AND NON-EXCHANGE PROGRAMME)

These accommodation options are open to all foreign students enrolled at Université Paris 1 Panthéon-Sorbonne.

Cité internationale universitaire de Paris (CiuP)

If you are a foreign master's student you can apply directly to the *Cité internationale universitaire de Paris* (CiuP) through their website.

Studapart

The Studapart online platform is a partner of Paris 1 Panthéon-Sorbonne and allows students to view advertisements for various types of accommodation (private accommodation, university halls, estate agent offers).

Contact

international-housing@univ-paris1.fr

Useful Websites

Crous:

www.crous-paris.fr/logement

CiuP:

www.ciup.fr

Studapart:

pantheonsorbonne.studapart.com/en

ADMINISTRATIVE PROCEDURES

Housing Insurance

Whether you are living in a Crous residence, at the CiuP or in a privately rented accommodation, you must take out housing insurance from an insurance company or a bank.

Housing insurance will cover damage in your accommodation in the event of burglary, fire or water damage for example. This insurance is mandatory and is the responsibility of the tenant. The rate of insurance varies depending, amongst other factors, on where your accommodation is located, its size and the total value of your possessions.

The insurer with whom you take out your policy can provide you with a certificate of civil liability. You will need this document in order to complete your administrative enrolment at the university. The certificate of civil liability will provide you with third-party insurance and personal possessions cover. The civil liability certificate can also be obtained via a mutual insurance company.

Security Deposit

When you sign your lease (or accommodation contract) the landlord will usually ask for a security deposit. This is a sum of money that the landlord will keep for the duration of the rental in the event of any breaches in contract on behalf of the tenant, such as missing rent payments or damage to the property. This will normally be returned to you providing there are no breaches of contract.

Guarantor

Landlords often ask tenants to prove that they have a guarantor who will pay their rent in the event of lapsed payments. A guarantor is generally a relative of the tenant, although this person can be a friend, who will promise to pay the tenant's rent in the event that the tenant is unable to do so. If you do not have a relative who can act as a guarantor for you then there are various specialist agencies you can consult.

The *Action Logement* group created a free type of guarantee for tenants called "Visa for Housing and Work" (Visale) that will cover the cost of rent in the event of deferred payments. Studapart also offers to students without a suitable guarantor a guarantee service for which you have to pay.

Personal Housing Assistance Fund (APL)

The Personal Housing Assistance Fund (APL) is a means-tested housing benefit that is awarded to help with covering the cost of rent.

You can apply to an APL benefit through the CAF (*Caisse d'Allocations Familiales*). The rate at which APL is paid varies depending on a number of factors, such as the location and size of your accommodation, and your financial resources. You can use the online CAF grant calculator to find out if you are eligible and the size of the benefit for which you could qualify.

Useful Websites

Visale: www.visale.fr

Campus France: www.campusfrance.org/en/student-housing-france

CAF: www.caf.fr

Social security affiliation is free and obligatory for all students in France, whether they are French or foreign nationals.

SOCIAL SECURITY

Why?	When?	How?	How much?
To get a portion of my healthcare cost reimbursed (medical consultations, medical tests, etc.).	As soon as possible after enrolling at Université Paris 1 Panthéon-Sorbonne.	By going to the Ameli webpage aimed at foreign students, which is available in both French and English.	It's free. Social security registration in France is free for all students, including French and foreign nationals.

I need to register if:

- > I am a European student without a European Health Insurance Card (EHIC).
- > I am a European student with an S1 form.
- > I am not a European student.

I don't need to register if:

- > I am European and I have a European Health Insurance Card (EHIC) or a temporary certificate. My medical costs will be reimbursed at the same level as they would be in my home country. This card must be valid until the end of the current academic year.
- > Regardless of my nationality, I was enrolled at a French higher education establishment during the academic year 2019-2020. I will still be covered by the same student insurance company and I am not allowed to change this. I do not have to carry out any further registrations.

Students who are nationals of a European country, Iceland, Lichtenstein, Norway, or Switzerland can apply for an EHIC card. These students do not have to register with French social security. You should apply for an EHIC card in your home country. An EHIC card will allow you to access medical care in France.

What is an S1 form?

The S1 form is only for citizens of the European Union, the European Economic Area (EEA) and Switzerland.

It is a document that you can apply for in your home country before departure at the health organisation with which you are registered. This document allows you to register for social security purposes in France.

There are reciprocal agreements linking France social security institutions and those in other countries. To find out more about these agreements please consult the *Centre des Liaisons Européennes et Internationales de Sécurité Sociale (CLEISS)* website.

HEALTH INSURANCE COOPERATIVES AND TOP-UP INSURANCE

In order to increase your health insurance payouts you can also register with a health cooperative or for top-up insurance.

How do I register with a health insurance cooperative?

You are advised to register with a health insurance cooperative in order to increase your health insurance payouts, however this is not obligatory. You can ask for a quote and compare rates of different student health insurance companies, insurance companies and banks.

Please ensure that the health insurance cooperative you register with can offer you personal public liability insurance as well as student public liability insurance, so that you will also be covered in your place of study or internship.

MEDICAL CONSULTATIONS

How can I see a doctor?

Université Paris 1 Panthéon-Sorbonne has its own health service called the *Service InterUniversitaire de Médecine Préventive et de Promotion de la Santé (SIUMPPS)* through which you can obtain a consultation with a doctor. Some consultations are free, if you require contraception, medical screening, vaccinations, nutritional support or psychological services for example.

You can also look up a doctor outside not affiliated with the university and make an appointment online or with the Doctolib mobile application.

You can receive free and confidential consultations from the *Planning Familial* if you have questions about sexuality, intimate relationships or contraception methods. Women can access prescriptions for a variety of contraception methods through the *Planning Familial*. The *Planning Familial* has branches all over France.



Useful Websites

Ameli for foreign students:
etudiant-etranger.ameli.fr

CLEISS: www.cleiss.fr

Doctolib: www.doctolib.fr

University webpage about health services:
www.pantheonsorbonne.fr/etudiant/sante

Planning Familial:
www.planning-familial.org

€ BANKS

The right to hold a bank account is written in French law. Foreign students in France can therefore open a bank account in any bank in France. Most major banks have branches in most towns. To open an account all you have to do is make an appointment with an in-branch adviser.

Opening a bank account will make daily life easier, in particular when paying bills (electricity, telephone, rent) and subscriptions (transport, internet). With a bank account you can also keep track of salary and health insurance payments more easily. A French debit card also allows you to pay for most things and prevents you from having to carry around large sums of cash. You are entitled to a bank card and a cheque book along with your account. You can easily set up standing orders for your various subscriptions using your RIB (*Relevé d'identité bancaire*).

Your bank statements can act as proof of means in France when it comes to renewing your resident permit.

The cost of having a bank card, international bank transfers, and withdrawing money abroad can vary noticeably between one bank and another so it is advised that you compare banks before taking out an account.

You must have (at least) the following three documents with you in order to open a bank account: a piece of identification, proof of address and a matriculation certificate or student card.

If you have difficulty opening a bank account there is a procedure called “*droit au compte*” that you can go *via*. In the event of this the *Banque de France* (Bank of France) will indicate a bank that will be obliged to provide you with a bank account. Details of this procedure, as well as the documents you have to provide and contacts of various organisations offering help with this procedure are on the *Banque de France* website.

Useful Website

Banque de France:
particuliers.banque-france.fr/jai-besoin-dun-compte-bancaire



2

LIVING IN PARIS

€ BUDGET

COST OF LIVING

The figures below must only be taken as a guide and can vary.

Accommodation



(Rent per month)

Studio at the Crous: €250-€550

Studio at the CiuP: €500-€800

Private studio: €800

Electricity and water per month: €50

Food and Restaurants



Meal at university canteen: €3.30

Meal in restaurant: €15-€20

Sandwich: €4-€6

Coffee: €2-€3

Baguette: €1

Pastry: €1-€1.50

Transport



Monthly travel pass: €75.20

Metro ticket: €1.90

Book of 10 metro tickets: €16.90

On-board bus ticket: €2

Telephone & Internet



(contract per month)

Mobile phone: €15

Internet: €20-€30

Entertainment



Cinema ticket: €8-€12

Exhibition entrance: €6-€14

Swimming pool entrance: €2-€3.50



WORKING IN FRANCE

French law allows foreign students to work 964 hours a year, or the equivalent of 60% of the legal working hours limit. Students can therefore only earn a partial salary. If you are not a European Union citizen then you must have a student residence permit in order to work in France.



You must request a work permit in the following three cases:

- > You must work more than the authorised number of hours
- > If you hold a temporary six-month visa
- > If you are an Algerian student

The Jobaviz free to use platform run by the Crous is an employment hub aimed at students, allowing them to find job opportunities that correspond to their studies and experience.

www.jobaviz.fr

The CIDJ (Centre d'Information et de Documentation Jeunesse), or Youth Information and Resource Centre, advertises a selection of job opportunities including student jobs.

www.cidj.com



GETTING AROUND

PARIS AND THE ÎLE-DE-FRANCE REGION

An extensive five-zone public transport network serves Paris and the Île-de-France region and includes metro, bus, tram, regional express train (RER), and regional train (Transilien) links. The RATP group is responsible for operating the majority of public transport services in Paris and the surrounding area.

If you would like to take out a subscription you have a choice between:

> **The “imagine R Étudiant” subscription:** annual subscription aimed at students under 26 living in the Île-de-France region for unlimited journeys around the entire region (all zones: €350/year).

> **The monthly “Navigo” subscription:** monthly subscription for unlimited journeys in all zones (€75.20/month)

Metro, bus and tramway

The price of a T+ paper ticket is €1.90 for one journey, which allows you to travel on metro lines, zone 1 RER lines, and bus and tram lines.

You can also subscribe to the Navigo Liberté + service and travel using a pay-per-use card. You will be charged the following month based on the journeys you have made. By using this service, you can benefit from a single rate of €1.49 per journey.

> **Metro** is the fastest, least expensive and most simple means of transport in Paris. The metro network is made up of 16 lines and more than 300 stations across Paris and its suburbs. On weekdays, services begin around 5.30am and finish around 1.15 am. On Friday and Saturday evenings, as well as on the eve of public holidays, services finish at 2.15am at the latest.

> **The bus** is an excellent way to discover Paris. Bus lines in Paris for the most part run from Monday to Sunday. Services may decrease on Sundays and holidays depending on the line.

> **Noctilien** is a bus service with 47 lines that allows you to get around in Paris and the Île-de-France region between 12.30am and 5.30am.

> Three of the **10 tram lines of Île-de-France** serve Paris: the T2, T3a and T3b. Tram tickets are the same as metro and RER tickets within Paris.



RER and Transilien

The RER network is made up of five lines (A, B, C, D, and E) that serve Paris and the Île-de-France region. Ticket prices are the same as for metro tickets when travelling within central Paris. Otherwise, the price of a ticket depends on your destination within the Paris region.

Transilien trains are regional trains that depart from Paris' major stations: the Gare du Nord, Gare de l'Est, Gare de Lyon, Gare d'Austerlitz, Gare Montparnasse and the Gare Saint-Lazare.

Cycling

Vélib' is the Paris bike-sharing system. One or seven-day passes and subscriptions, including commitment-free subscriptions, are available for use of the pedal bikes and electric bikes.

Île-de-France Mobilités offers a long-term rental service (6 months) of e-bikes called “Véligo Location”.

IN FRANCE AND ABROAD

By Plane

Paris is served by three international airports:

> Charles de Gaulle Airport (CDG)

RER B (Aéroport Charles de Gaulle 1 station for terminals 1 and 3 and Aéroport Charles de Gaulle 2-TGV station for terminal 2)

TGV (Gare Aéroport Charles de Gaulle 2-TGV)

RATP bus: lines 350 and 351

Noctilien bus: lines N140 and N143

Roissybus

Bus Direct, lines 2 and 4

> Paris-Beauvais Airport (BVA)

Paris-Beauvais Shuttle (Metro line 1 or RER line C, Porte Maillot station)

> Paris Orly Airport (ORY)

RER B and the “Orlyval” shuttle train, or **RER C** and “GO C Paris” shuttle bus

RATP bus: line 183

Noctilien bus: lines N22, N31, N131 and N144

Orlybus

Bus Direct, line 1

Tram (line T7) and **metro** (line 7)

Regional express train (TER) (Paris Gare du Nord)

By train

The French train network is very well developed. In general, the train is the fastest means of transport and the most practical for traveling in France. The extensive TGV network (*Train à Grande Vitesse*) is the country's most efficient train service. SNCF is the country's national rail company.

SNCF stations in Paris:

Paris Austerlitz	Paris Saint-Lazare
Paris Est	Paris Bercy Bourgogne – Pays d'Auvergne
Paris Gare du Nord	Paris Gare de Lyon
Paris Montparnasse	

By coach

For a more leisurely and cost-effective option, the bus is a practical means of travelling around France. Several coach companies serve the Bercy-Seine station and the Paris-Gallieni international coach station, one of the biggest in Europe.

Useful Websites

Imagine R: www.imagine-r.com

Île-de-France Mobilités :
www.iledefrance-mobilites.fr

RATP: www.ratp.fr

Transilien: www.transilien.com

Vélib' Métropole:
www.velib-metropole.fr

SNCF: www.sncf.com

Véligo : veligo-location.fr



GOING OUT

Paris is the world's number one cultural destination: welcoming, cosmopolitan and with an impressive cultural heritage. In the QS Best Student Cities 2019 ranking, Paris was selected as the 4th best student city in Europe and the 7th best in the world.

Paris is alive with exhibitions, shows, festivals and sports events all year round. Art, architecture, fashion, food and crafts are constantly being reinvented in the heart of the French capital.

In every neighbourhood of Paris there are unmissable attractions, secret gardens and hidden gems, on the hill of Montmartre to Montparnasse, the Latin Quarter to the Canal Saint-Martin and on the quays of the Seine.

Key Figures:

3 operas

191 museums

2,198
historical monuments

734 cinema screens

29 cabarets

Source: "Le Tourisme à Paris -
Chiffres clés 2018" - OTC

MUSEUMS AND MONUMENTS

With nearly 200 museums, Paris has one of the most varied cultural scenes in the world in terms of the art forms represented and themes presented. Painting, sculpture, photography, contemporary art and science is constantly being produced in response to a wide range of themes to engage all tastes.



Free Admission for Under 26s

Access to permanent collections in almost 50 of the museums and monuments in Paris and the Île-de-France region is free for young people under 26 who come from one of the European Union member states (Louvre Museum, Musée d'Orsay, Palace of Versailles, etc.). There is also a reduction for temporary exhibitions in most museums.

Museums with Free Admission

It is free for everyone to visit the permanent collections in 12 of the 14 City of Paris' museums all year round (only the Île de la Cité Archeological Crypt and the Catacombs of Paris still have entrance fees).

A Few Must See Destinations

Arab World Institute

Arc de Triomphe

Catacombs of Paris

Cinémathèque française

Cité de l'architecture et du patrimoine

Cité des sciences et de l'industrie

City of Paris Museum of Modern Art

Eiffel Tower

Grand Palais

Louis Vuitton Foundation

Louvre Museum

Maison européenne de la photographie

Musée d'Orsay

Many other museums are free all year round, such as the Air and Space Museum, the Musée du Parfum Fragonard, the Shoah Memorial and the Curie Museum.

Musée de l'Orangerie

Musée de la musique

Musée des Arts Décoratifs

Musée du quai Branly – Jacques Chirac

Musée Picasso

Musée Rodin

National Museum of Natural History

Palace of Versailles

Palais de Tokyo

Panthéon

Petit Palais

Pompidou Centre

Our Selection:

National Library of France (BnF)

Hôtel de Ville de Paris

Gaîté Lyrique

Musée de Montmartre

Musée des Archives nationales

Pavillon de l'Arsenal



You can also wander freely around the capital's 490 public parks and gardens, which is the greenest in Europe. The only difficulty is choosing between The Bois de Vincennes or The Jardin du Luxembourg, The Buttes-Chaumont or the Jardin des Plantes.

Outside of Paris, there are many getaway destinations within an hour and a half's reach to rival what you can find in the capital. Following the trail of the Impressionists at Auvers-sur-Oise or Giverny, visiting one of the region's many castles such as Vaux-le-Vicomte or Fontainebleau, or even discovering the Villa Savoye designed by architect Le Corbusier in Poissy – the possibilities are endless.

EVENTS

You can find below a selection of unmissable cultural and sporting events held in Paris each year. These events may be subject to rescheduling in the event of exceptional circumstances.

European Heritage Day: third weekend in September

Free or reduced entrance to iconic sites that are not often open to the public for one-off visits.

Nuit Blanche in Paris: first Saturday in October

Art installations open for all-night viewing until dawn in public spaces and Parisian buildings.

Chinese New Year: sometime between the end of January and the beginning of February

See traditional costumes and displays passing through the heart of Paris' Chinatown in spectacular processions.

Printemps du cinéma: beginning of Spring

Benefit from cinema tickets at €4 for all films across all cinemas for a period of three days.

Paris Marathon: April

One of the world's biggest marathons, bringing together almost 55,000 runners.

European Night of Museums: Saturday closest to 18th May

Chance to visit Parisian museums at night and attend one-off demonstrations.

Roland-Garros - The French Open: end of May - beginning of June

The world's biggest clay surface tennis tournament.

Fête de la musique: 21st June

Free street and garden concerts, as well as concerts in Parisian churches, bars and clubs.

Fête du cinéma: end of June – beginning of July

Benefit from cinema tickets at €4 for all films across all cinemas for four days.

Bastille Day: 14th July

Fireworks are launched off the Eiffel Tower to celebrate the country's national day.

Paris Plages: from the start of July till the end of August

Sand, deckchairs, palm trees and organised activities along the banks of the Seine and the Bassin de la Villette.

THEATRES

With more than 300 performances a week and 130 performance spaces, Paris has a huge variety of plays running throughout the year.

Several private theatres in the capital offer €10 entrance to young people under 26 with support from the City of Paris on Tuesdays, Wednesdays and Thursdays, subject to availability.

The *Comédie Française* is the quintessential French theatre and offers tickets to under-28 without reservations an hour before showtime on Mondays.

CINEMA

Between 450 and 500 films screen every week in Paris and cinemas show a very wide range of films, with new films coming out every Wednesday. Every Parisian *arrondissement* is home to one or more cinemas, and most French cinemas screen foreign films in the original version with French subtitles.



The *Lost in Frenchlation* society offers non-French speakers the opportunity to enjoy French films with English subtitles in classic Parisian cinemas. You can enjoy a drink before the film and a lively debate in English afterwards.

Most cinemas in Paris offer reduced tickets to students and young people under 26. In some cinemas entrance for morning screenings is available at a reduced price.

TOP TIPS

Kiosque Jeunes

Kiosque Jeunes is a scheme put in place by the City of Paris opening up a variety of cultural activities available to 13 to 30 year olds, including concerts, plays and sporting events.

In order to benefit from these offers you simply have to make a Parisian account on **moncompte.paris.fr** and then create and activate your profile on **kiosquejeunes.paris.fr/kiosquejeune**.

You can also get involved with these activities without pre-registering online by going directly to the *Kiosque Jeunes* from Tuesday to Friday between 11am and 7pm at the following address: Kiosque Jeunes, 10 passage de la Canopée, 75001 Paris.

Pass Jeunes

Every year between mid-June and the beginning of the academic year, Parisians aged between 15 and 25 can get free or reduced access to a large selection of cultural, sporting and leisure activities with the *Pass Jeunes*. This little booklet is completely free and contains coupons for exhibitions, monuments, swimming pools and cinemas.

To receive a *Pass Jeunes* (subject to available stocks) you must reserve it online at **passjeunes.paris.fr** and then collect it from a distribution point.

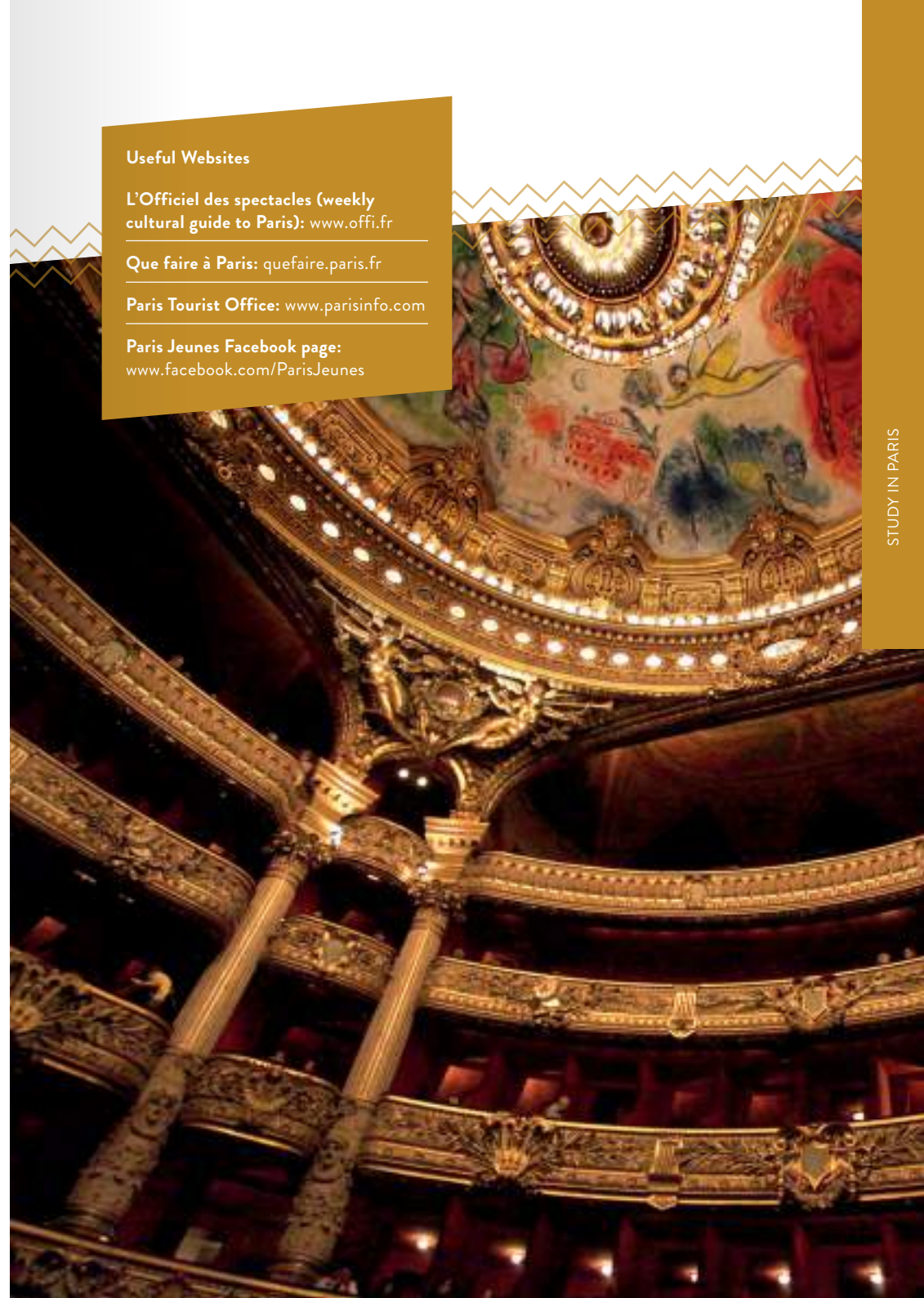
Useful Websites

L'Officiel des spectacles (weekly cultural guide to Paris): www.offi.fr

Que faire à Paris: quefaire.paris.fr

Paris Tourist Office: www.parisinfo.com

Paris Jeunes Facebook page:
www.facebook.com/ParisJeunes



3

UNIVERSITY LIFE

P34 Organisation of Studies

P36 Becoming a Student at Paris 1
Panthéon-Sorbonne

- > Enrolment
- > Orientation week

P40 Ressources

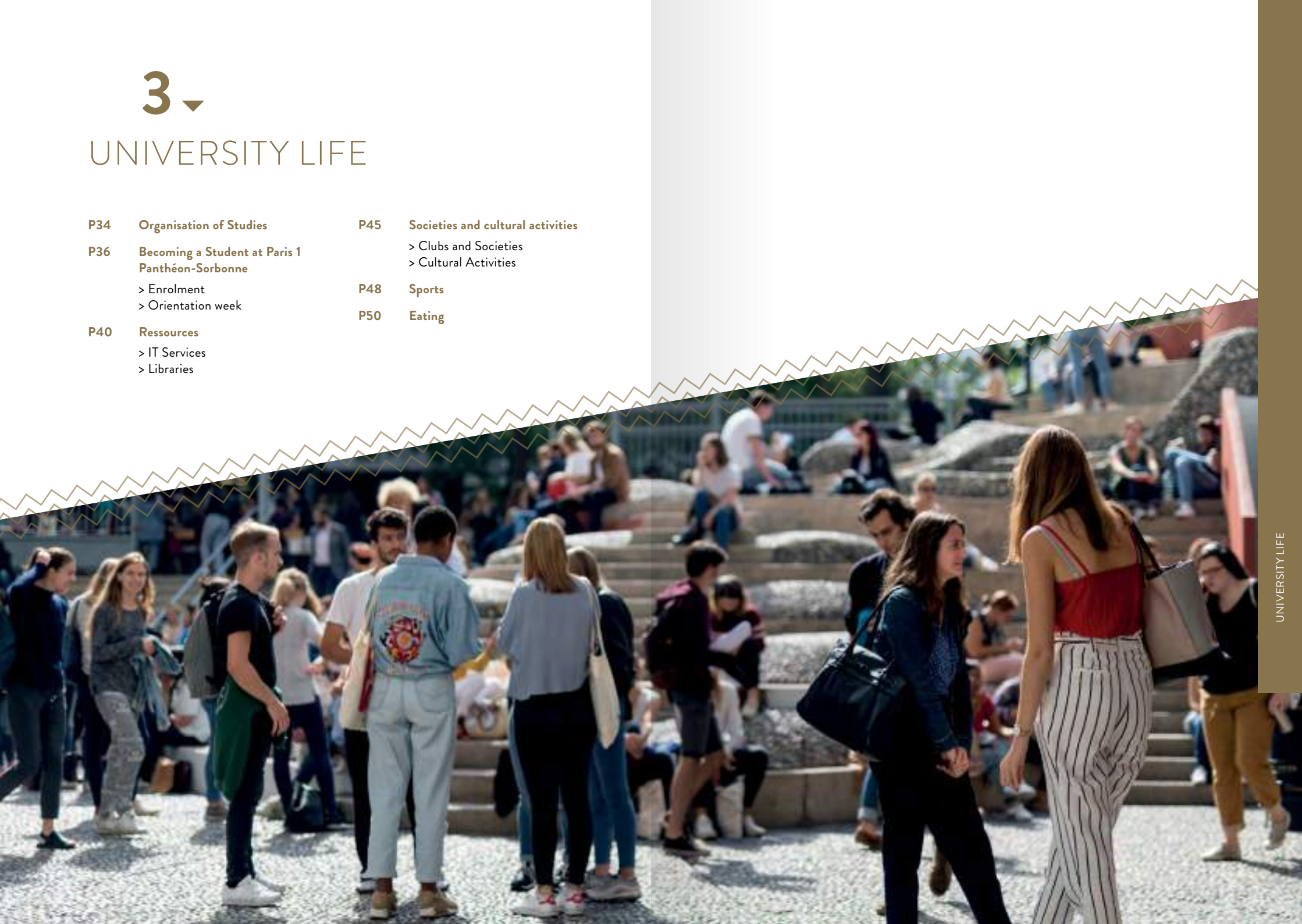
- > IT Services
- > Libraries

P45 Societies and cultural activities

- > Clubs and Societies
- > Cultural Activities

P48 Sports

P50 Eating



3

ORGANISATION OF STUDIES

France, like most European countries, joined the Bologna Declaration (1999), which is considered to be the starting point for the construction of European higher education space.

European countries decided to harmonise the European higher education system in order to ensure the recognition of qualifications across Europe and support student, staff and researcher mobility. The current system rests on several key principles.



A THREE-TIER CURRICULUM

Bachelor's

In France undergraduate degrees are taken over three years, or six semesters.

Master's

After completing an undergraduate degree, students can study for a master's degree over two years (or four semesters) that can be taken immediately after a bachelor's degree or can be part of a programme of lifelong learning. Master's qualifications are designed to:

- > prepare students for research careers;
- > prepare students to take an advanced qualification and find employment at a high level.

PhD

Upon completion of a master's, students can enrol to begin doctoral studies. All students who hold a master's degree can apply to study for a PhD, whether they hold a master's degree, an engineering degree, or have a master's level qualification from a business school.

On average, doctoral studies last for three years.

THE DIVISION OF TEACHING INTO SEMESTERS

Each academic year is divided into two semesters, each worth 30 ECTS credits (European Credits Transfer System). Subjects are grouped into modules (*UE - Unité d'Enseignement*) that require participation in lectures, seminars (TD) and practical exercises (TP).

Lectures

These take place in lecture theatres, often called "amphis", sometimes with as many as 1,000 students present.

Seminars and Practicals

Seminars (TD) and practical exercises (TP) are small-group classes that take place in classrooms or laboratories, exploring lecture topics in greater depth.

THE EUROPEAN CREDIT SYSTEM

Each module is worth a certain number of ECTS credits and a complete semester is worth 30 ECTS credits. Each module (UE) completed within a semester results in the award of ECTS credits. One semester of study is worth 30 credits and an academic year is worth 60 ECTS credits. This is the total volume of work that a student should complete during the course of a year. This system makes it easier for qualifications to be recognised across European countries. It also makes it easier for the credits obtained in one institution to be recognised in another institution in a different European country.

CLASSES

University classes generally start in September and finish around late May to early June before the end of year exams.

GRADING SYSTEM

The grading scale in France goes from 0 at the bottom of the scale to 20. Students must achieve 10/20 to be awarded ECTS credits.

ASSESSMENT

There are two types of university assessment: continuous assessment and examinations. Continuous assessment takes place throughout the year and can take the form of oral or written examinations covering all topics on the syllabus.

Examinations assess students' knowledge in all syllabus topics over the course of a few days. For modules assessed via examinations students will be assessed at two points of the year (with examinations held at the end of semester one and end of semester two). Every qualification has its own specific assessment procedures.

RESITS

During the resit period students can retake examinations for which they did not receive a passing grade. First and second semester resits take place at the end of the academic year.

Useful Website

Campus France: www.campusfrance.org/en/French-higher-education

3

BECOMING A STUDENT AT PARIS 1 PANTHÉON-SORBONNE



Once you have been accepted to study at Paris 1 Panthéon-Sorbonne you must complete the three enrolment steps:



STUDENT AND CAMPUS LIFE CONTRIBUTION (CVEC)

Exchange students do not have to pay the CVEC fee. However, foreign students who are not part of an exchange programme or are continuing their education at Université Paris 1 Panthéon-Sorbonne must pay this contribution before enrolling. The rate of this contribution is €92.

You can obtain your proof of payment in two minutes:

- > Create an account at [MesServices.Etudiant.gouv.fr](https://mes-services.etudiant.gouv.fr)
- > Select Paris as your place of study
- > Pay your CVEC contribution
- > Receive your proof of payment and present it to Paris 1 Panthéon-Sorbonne when you enrol.

You are exempt from paying the CVEC contribution if either of the following cases apply to you: you are a refugee who is in receipt of subsidiary protection, an asylum seeker with the right to stay in France, or a means-tested Crous grant holder.

ADMINISTRATIVE ENROLMENT

If you are accepted to take part in an exchange programme, once you are officially nominated you will receive a link within a month that will allow you to apply for this exchange programme. You will remain enrolled at your home university to which you will continue to pay your usual tuition fees. You do not need to pay any tuition fees to Paris 1 Panthéon-Sorbonne.

You will receive by email instructions on how to complete your administrative enrolment on Paris 1 Panthéon-Sorbonne's Primoweb site (for both exchange students and full-degree students). You will receive a pre-enrolment number along with these instructions and a step-by-step tutorial. You will need your pre-enrolment number to access the Primoweb site, as well as your date of birth.

For non-EU nationals, you can apply for a student visa using your enrolment letter if you live abroad, or request a renewal of your residence permit with this letter if you live in France.

Once enrolled you will receive a confirmation printable email and your student number. Keep this number as it will allow you to activate your account on the ENT (virtual learning space) and access the university's online services.



On your ENT account you will find a tab entitled "Pièces Justificatives" where you should upload the documents required to complete your enrolment.

These documents are:

- > Identification document (passport or national identity card)
- > Academic transcript of secondary school qualifications along with a translation (also required for master's courses)
- > Proof of online payment of registration fees (copy of this email)
- > Proof of civil liability insurance, which you can obtain from your relevant insurer (you can upload this later to the ENT).

ACADEMIC ENROLMENT

Once you have finished your administrative enrolment at the university you must proceed to complete your academic enrolment with your academic department. You must complete this step in order to be able to sit your examinations. Enrolment in language classes (eg. French as a foreign language), sport and cultural activities should be completed through the relevant services: the Languages Department (DDL), Sports and Physical Education Department (UEFAPS) and the Student Life Service (SVE).

Additional information for exchange programme students:

Before your departure you must sign your learning agreement that lists the classes you will be taking at Paris 1 Panthéon-Sorbonne, as well as the equivalent classes in your home university. Upon passing these courses you will then be awarded with credits for equivalent classes in order to obtain your final qualification in your home institution. Once you arrive at Paris 1 Panthéon-Sorbonne you must enrol in the classes detailed in your learning agreement. You must take an initial meeting with your international relations delegate teacher upon arrival so that they can check your timetable. Once you have completed this step you must go to the administrative office for each class in order to complete your academic enrolment.

Contacts

Exchange programme mobility:
incoming-exchange@univ-paris1.fr

Non-exchange programme mobility:
incoming-fulldegree@univ-paris1.fr

Enrolment

Telephone helpline:
01 71 25 11 37 (within France)
or +33 1 44 07 89 45 (from abroad)

Useful Websites

CVEC: cvec.etudiant.gouv.fr

Primoweb: primo.univ-paris1.fr



ORIENTATION WEEK

Every year leading up to the start of semester one in September and the start of the second semester in January, orientation weeks are held for incoming students. These weeks are a chance for students to become better acquainted with the university.



Orientation week participants have the opportunity to improve their skills in French as a foreign language (FLE). Students are grouped based on an online language placement test they take at the beginning of this week. Students may also attend university methodology classes for each discipline as well as research method classes offered by the library in order to support students with using the online resources.

At the start of the orientation week there is an introductory meeting at which representatives give information about various university services, such as the International Relations Department, the Languages Department, sports services, the Student Life Service, and health services. The International Students Association of Paris 1 (ISAP1) is also invited to participate in running activities during the week, helping international students to become better integrated into the university and life in Paris.

The orientation week finishes with a cocktail reception which is a chance for students to meet and get to know each other.

If you would like to participate in Paris 1 Panthéon-Sorbonne's orientation week then you must fill out an application form online that will be sent to you prior to your arrival as places are limited. Your offer to study at Université Paris 1 Panthéon-Sorbonne does not guarantee a place on the orientation week.

Participating in all sessions during the orientation week does not lead to the obtention of credits (ECTS).

Contact

orientationweek@univ-paris1.fr

Useful Website

Facebook page for ISAP1:
www.facebook.com/ISAP1Sorbonne

3

RESSOURCES

IT SERVICES

You will receive your login details to access the university's online resources once you have administratively enrolled. You can activate your Paris 1 Panthéon-Sorbonne account using these details and create a password.

This account allows you to connect to all online university services through a virtual learning environment (ENT), giving you access to:

- > Interactive Learning Spaces (EPI)
- > university email
- > personal online storage space
- > exam results
- > the university directory
- > online academic resources
- > library catalogues
- > your university eReader account



DIGITAL LEARNING

Interactive Learning Spaces allow you to access and download resources tutors put online (such as lecture notes, exercises, seminar work, lesson plans, past exam papers, reading lists, etc.). You can also complete exercises set by tutors online (such as interactive exercises, submit homework, and use class forum, etc.).



PIX (ONLINE PLATFORM FOR ASSESSMENT AND CERTIFICATION OF DIGITAL SKILLS)

Undergraduate students take a Digital Culture and Skills training course within seminar classes, which can take the form of a mix of face-to-face and online teaching. The face-to-face PIX class takes place sometime between November and May (please consult the EPI for more information about times and dates).

COMPUTER ROOMS

Paris 1 Panthéon-Sorbonne students can make use of a number of computer rooms upon presentation of a valid student card. These can be found at:

- > Centre Pierre-Mendès-France: room C404
- > Centre Panthéon: room 52 bis (stairwell G)
- > Centre Sorbonne: room C614

The EDUSPOT Wi-Fi network is available on all the university's sites, as well as in most higher education and research establishment buildings in France.

If you have trouble using Paris 1 Panthéon-Sorbonne's online services please click on the "Assistance" tab within your virtual learning environment account.

Contact

IT support:
assistance-dsiun@univ-paris1.fr

Useful Websites

Complete institutional digital navigation guide: ent.univ-paris1.fr/gun

Wi-Fi configuration instructions:
wifi.panthéonsorbonne.fr

PIX website: pantheonsorbonne.fr/pix

LIBRARIES

More than two thirds of undergraduate students enrolled at Université Paris 1 Panthéon-Sorbonne go at least once a week to the Paris 1 Panthéon-Sorbonne libraries and to inter-university libraries.



The most popular are the library in the Centre Pierre-Mendès-France (PMF) as well as the 5th arrondissement inter-university libraries: the BIS (Sorbonne inter-university library), the

Cujas library, Sainte-Barbe library and Sainte-Geneviève library.

While first and second year undergraduates tend to use the PMF library, third year undergraduates often use the inter-university libraries. There are also centres reserved for the use of second year master's and doctoral students, which although they are not listed here can be found on the Université Paris 1 Panthéon-Sorbonne website under the "libraries" tab.

CONSULTING AND BORROWING DOCUMENTS

Books, periodicals and academic journals available in Université Paris 1 Panthéon-Sorbonne libraries are marked in the online catalogue, which is accessible through the ENT from any computer with internet access. This catalogue allows you to determine whether the article is available in the library and whether or not it is out on loan.

Electronic resources (ejournals and e-books, data sets, etc.) are accessible through the **Domino** portal.

Documents that are not in the library catalogue and are available in other university or public libraries in Paris can be sent via interlibrary loan (PEB). The service is only available to members of Université Paris 1 Panthéon-Sorbonne (students, teaching staff, administrative staff).

LIBRARIES OPEN TO FIRST YEAR UNDERGRADUATES UPWARDS

Location

Subjects

Bibliothèque Pierre Mendès-France (Paris 1 Panthéon-Sorbonne) Centre PMF 90, rue de Tolbiac 75013 Paris 5 th floor (green lifts)	Law and political science Economics and management Philosophy history, geography, art, archeology Social sciences Information and communication sciences
Bibliothèque Sainte-Barbe (inter-university) 4, rue Valette 75005 Paris	Law and political science Economics and management Literature and languages Arts Humanities and social sciences Health and medicine
Bibliothèque Sainte-Geneviève (inter-university) 10, place du Panthéon 75005 Paris	Literature Arts Humanities and social sciences Heritage collections
Centre de documentation de l'UFR03 (Paris 1 Panthéon-Sorbonne) Centre Vivienne 2, rue Vivienne 75002 Paris 1 st floor	History of art Photography Film studies
Bibliothèque de l'École des Arts de la Sorbonne (Paris 1 Panthéon-Sorbonne) Centre Saint-Charles 47, rue des bergers 75015 Paris 2 nd floor, room 260 (next to lift)	Contemporary art

Bibliothèque Michelet Centre Michelet 3, rue Michelet 75006 Paris Mezzanine	History of art Archaeology
Bibliothèque Jean-Claude Colliard (Paris 1 Panthéon-Sorbonne) Campus Port-Royal 1, rue de la Glacière 75013 Paris	Law
Bibliothèque Cujas (inter-university) 2, rue Cujas 75005 Paris	Law Economics Political science

LIBRARIES OPEN TO THIRD YEAR UNDERGRADUATES OR FIRST YEAR MASTER'S STUDENTS UPWARDS

Location

Subjects

Bibliothèque Interuniversitaire de la Sorbonne (BIS) (inter-university) Centre Sorbonne 17, rue de la Sorbonne 75005 Paris Entrance through Sorbon and Richelieu galleries	History Philosophy Literature Geography Heritage collections Ancient history
Bibliothèque Lavis (Paris 1 Panthéon-Sorbonne) Centre Sorbonne 17, rue de la Sorbonne 75005 Paris Stairwell C, 3 rd floor	History
Bibliothèque d'archéologie et des sciences de l'antiquité - Maison René Ginouvès 21, allée de l'Université 92023 Nanterre Ground floor	Archeology Prehistory and protohistory Ethnology and comparative sociology Ethnomusicology Ancient and medieval history Classics
Bibliothèque Cuzin (Paris 1 Panthéon-Sorbonne) Centre Sorbonne 17, rue de la Sorbonne 75005 Paris Stairwell C, 1 st floor LHS	Philosophy
Bibliothèque de l'Institut de géographie de la Sorbonne (associated with the BIS) 191, rue Saint Jacques 75005 Paris	Geography

Location	Subjects
Bibliothèque Jacques Lagroye (Paris 1 Panthéon-Sorbonne) Centre Sorbonne 14, rue Cujas 75005 Paris <i>Stairwell K, office H611</i>	Political science
Centre de documentation de la Maison des Sciences Économiques (Paris 1 Panthéon-Sorbonne) Maison des Sciences Économiques (MSE) 106/112, boulevard de l'Hôpital 75013 Paris <i>Ground floor</i>	Economics Applied mathematics
Bibliothèque de l'Institut d'Études du Développement de la Sorbonne (Paris 1 Panthéon-Sorbonne) 45 bis, avenue de la Belle Gabrielle 94130 Paris <i>Building 1, room 025</i>	Development Studies
Centre de documentation de l'ISST (Paris 1 Panthéon-Sorbonne) Centre Bourg-la-Reine 16, bd Carnot 92340 Bourg-la-Reine	Sociology Law Economics Management
Finances Publiques Centre Panthéon 12, place du Panthéon 75005 Paris <i>2nd floor, room 201</i>	Public finance

Contacts

Library services (SCD):
rascd@univ-paris1.fr

Loans service: pretbu@univ-paris1.fr

Useful Website:

Domino portal: domino.univ-paris1.fr

3

SOCIETIES AND CULTURAL ACTIVITIES



CLUBS AND SOCIETIES

Université Paris 1 Panthéon-Sorbonne has many student societies, including cultural societies, sports and subject societies, and union societies. There is a huge choice if you are interested in getting involved in the university's student clubs and societies.



Societies are an excellent way of meeting other students and gaining experience in a variety of fields. If you are interested in student societies you can stay updated with their news and join if you wish.

The International Students Association of Paris 1 (ISAP1) help international students become more integrated at the university. The association runs a buddy system with regular activities organised for participants, including many cultural visits. You are welcome to attend these events all throughout the year, whether or not you are an exchange student, staying for a semester, a year, or more.

You can find the full list of Paris 1 Panthéon-Sorbonne clubs and societies along with contacts for these on the university website.

Paris 1 Panthéon-Sorbonne societies organise events all year round that take place within and outside of the university. The Student Life Service (SVE) give information about these events via their Facebook page.

Contact

Student Life Service:
sve@univ-paris1.fr

CULTURAL ACTIVITIES

Various workshops are organised by the cultural activities service with something on offer for theatre lovers, as well as those interested in music, writing and radio. Information about these activities is available through student societies.

Theatre

Université Paris 1 Panthéon-Sorbonne offers three theatre workshops for amateurs and experienced performers alike. They are a wonderful way to begin or continue developing your theatre skills.

You can also receive reductions for theatre tickets when you enrol in theatre workshops in partnership with the Théâtre des Quartiers d'Ivry and the Odéon-Théâtre de l'Europe.

Rehearsals are held for two or three-hour sessions each week, either in university buildings or elsewhere in Paris. Each workshop group puts on a production at the end of the year.

Enrolment for annual workshop groups is at the start of the academic year and the number of places is limited.

If you are interested in learning about improvisation techniques there is also an English language improvisational theatre group.

Music

The Paris Universities Orchestra and Choir (O.C.U.P.) attracts roughly 200 amateur student musicians and singers each year.

The group is open to students from higher education establishments in Paris and the Île-de-France region and is run in partnership with the Crous, the *Mairie de Paris* and eight

universities in Paris and the surrounding region. It is a great way to share in a passion for music and meet students studying other subjects and from different backgrounds. The group is keen to emphasise inter-university exchange with other European institutions with a strong record in music.

The orchestra and choir perform several times a year at concerts involving Parisian and European universities and other prestigious locations.

The orchestra recruits at the beginning of the academic year and auditions take place in September. You must be an experienced player. Knowledge of music theory is an advantage when joining the choir however beginners are also welcome.

Photography

The photography workshop is suitable for both beginners and more advanced photographers. Combining theory and practice, it offers students an introduction to the aesthetics of contemporary photography, a training in basic shooting techniques and it also addresses the stage of post-production work.

There is no specific equipment required and the sessions take place once a week within the university. The photography workshop is only open to full-year registration and the number of places is limited.

Writing

Paris 1 Panthéon-Sorbonne offers a workshop group run by a novelist for students who would like to start writing or develop their work. This is a chance to enjoy the unique benefits of participating in a workshop group, share one's work and take part in discussion. There are two three-hour sessions each month. At the end of the year all group members contribute to the publication of a book featuring everyone's work.

Enrolment for the workshop is for the whole year and there is a limited number of places.

Radio

Université Paris 1 Panthéon-Sorbonne offers a radio workshop in partnership with Radio Campus Paris.

Radio Campus France was created in 1998 and is the local independent student radio station in the Île-de-France region.

This workshop offers students the chance to discover the world of radio by learning about production and editing techniques. You can also learn how to produce reports and features and to conduct interviews. Over the course of the sessions you will work on an editorial project that will culminate in the joint-production of a programme with a live studio audience and special guests.

Enrolment in the radio workshop takes place at the beginning of each semester and the number of places is limited.

Cultural Events

This Student Life Service organises a Student Short Film Festival every year in March at Université Paris 1 Panthéon-Sorbonne. Now in its 16th year, this event is an opportunity for students at the university to show their films to the public and to a panel of academics and industry professionals.

15 short films are selected each year to be shown at a competitive screening in a Parisian cinema. There is always a diverse programme with dramas, animations and documentaries.

There are documentary screenings, conferences, exhibitions and debates organised all year round in various university centres. Thanks to the numerous partnerships Université Paris 1 Panthéon-Sorbonne has with theatres and other cultural venues in Paris and the Île-de-France region, you can benefit from special rates for shows all year round. Go to the university's website to see the list of partners and get the link to the Crous ticket office for other preferential rates.

You can get in touch directly with the Student Life Service and check their Facebook page for more information about societies, workshops and cultural events at the university.

Useful Websites:

ISAP1: www.facebook.com/ISAP1Sorbonne

O.C.U.P.: www.ocup.fr

Radio Campus Paris:
www.radiocampusparis.org

3 SPORTS

There are many sporting activities at the university that you can participate in as part of your university studies or independently in your own time.

SPORTS AND PHYSICAL EDUCATION DEPARTMENT (UEFAPS)

UEFAPS runs a number of activities led by sports and physical education teachers. The teaching team offers many different activities from beginner to advanced level. You can consult the full list of activities, timetables, and practical information on the UEFAPS website.

Credit-Bearing Courses

More than thirty activities from beginner to advanced level are offered. You can only choose one of them as part of credit-bearing courses.

Participation in organised sports activities could qualify you for extra-credit, equating to a maximum of a 0.5 point grade average increase across the semester. You can also choose an optional sports activity as part of a module (UE) of your course of study, and thus obtain ECTS credits.

Please note that the modalities of sports credit-bearing courses may vary according to your level of study and your academic department.

Extracurricular Courses (non Credit-Bearing)

There are around 50 sports activities on offer for students to participate in during their free time. These activities are non credit-bearing and do not appear on students' timetables.

Disabled Students

Disabled students can take part in group classes and/or schedule individual sessions to participate in sporting activity as part of the *Parcours Personnalisé d'Éducation Physique et Sportive* (PPEPS).

How do I enrol?

You can enrol online via the RéservaSport application. When going to the first course, you must have a valid student card and a French medical certificate less than three months old indicating your fitness to participate in the sports you have chosen.

PARIS 1 SPORTS ASSOCIATION (ASSOCIATION SPORTIVE PARIS 1)

AS Paris 1 is an affiliated member of the *Fédération Française du Sport Universitaire* and coordinates a wide range of sporting competitions at all levels. You can consult the programmes and results on the *Ligue Paris Île-de-France du Sport Universitaire* (LIFSU) website. Competitions generally take place during the 1st week of November. You have to be a member of the sports association at the time of the first competition in order to participate.



How do I sign up for AS?

Please take your student, three ID photos and your medical certificate(s) to Office C803. You can pay the subscription fee by cheque or in cash.

Contacts

UEFAPS: uefaps@univ-paris1.fr

AS Paris 1: assport@univ-paris1.fr

Useful Websites

UEFAPS: uefaps.univ-paris1.fr

AS Paris 1: uefaps.univ-paris1.fr/association-sportive-paris-1-competitions

RéservaSport: rsport.univ-paris1.fr

PPEPS: uefaps.univ-paris1.fr/handisport-ppeps

LIFSU: sport-u-iledefrance.com

3

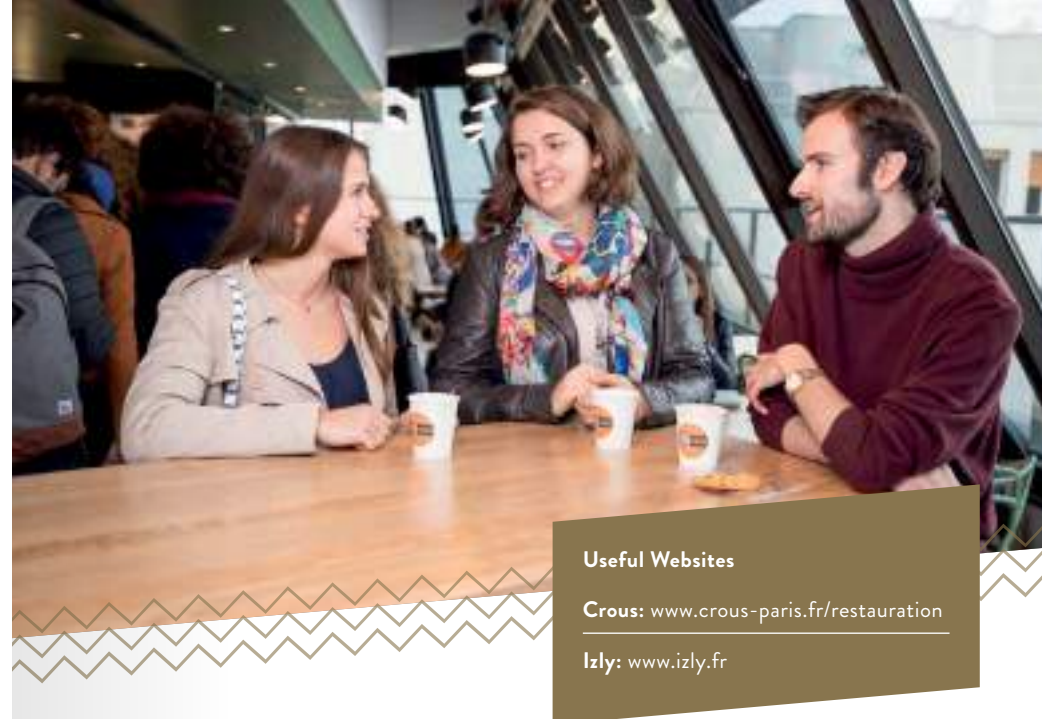
EATING

There are several Crous eating options located around the university where you can buy a three-course meal for €3.30 to sit in or take away. There is a six-point menu system, allowing you to choose a main course for three to five points and a starter and dessert for one or two points each. There are many Crous university canteens, *cafés* and take-away vans to choose from.

Please consult the “Restauration” tab on the Crous website to find more information about Crous canteens, such as which is closest to your place of study or which is open latest.

LIST OF CROUS UNIVERSITY CANTEENS IN PARIS

Bullier	39, av. Georges Bernanos – 75005 Paris
Censier	31, rue Geoffroy Saint Hilaire – 75005 Paris
Châtelet	10, rue Jean Calvin – 75005 Paris
Cuvier	8 bis, rue Cuvier – 75005 Paris
L'ardoise	4, place de Jussieu – 75005 Paris
Mabillon	3, rue Mabillon – 75006 Paris
Saints-Pères	45 rue des Saints-Pères – 75006 Paris
Halle aux Farines	3, esplanade Pierre Vidal Naquet – 75013 Paris
Grands Moulins	14, esplanade Pierre Vidal Naquet – 75013 Paris
La Barge du Crous de Paris	2 Quai Port de la Gare – 75013 Paris
Tolbiac	17, rue de Tolbiac – 75013 Paris
Cité Internationale	23 boulevard Jourdan – 75014 Paris
Dauphine	2, boulevard Lannes – 75016 Paris
IUT Descartes	143, avenue de Versailles – 75016 Paris
Bichat	16, rue Henri Huchard – 75018 Paris
Clignancourt	17 rue Francis de Croisset – 75018 Paris
Boulogne	71, avenue Édouard Vaillant – 92100 Boulogne-Billancourt
Condorcet	14, cours des Humanités – 93300 Aubervilliers



IZLY CONTACTLESS PAYMENT

All Crous canteens work with the Izly contactless payment system.

This system is faster because it's contactless, simpler because you can recharge your account online or on the Izly mobile app, and safer as the money on your account is not lost if you lose your card. For students within the *Académie de Paris*, the Izly card is the same card as the student card. To activate the Izly card you just have to make an account online using your Paris 1 Panthéon-Sorbonne email address.



4

PRACTICAL INFORMATION

P54 University Calendar

P58 Paris 1 Panthéon-Sorbonne
Study Centres

P60 Acronyms

P62 Contacts

- > International Relations
Department
- > Paris 1 Panthéon-Sorbonne
- > Emergency Numbers

P63 Check-lists



4

UNIVERSITY CALENDAR

Valid for all courses except second year of master's degree, lifelong learning and apprenticeship.
Teaching start date for students in second year of a master's degree, lifelong learning and apprenticeship: 14th September 2020.

SEMESTER ONE: 2020-2021

Monday 21st September – Saturday 24th October: Teaching
Sunday 25th October – Sunday 1st November: Autumn Break
Monday 2nd November – Saturday 19th December: Teaching
Sunday 20th December – Sunday 3rd January: Christmas Holidays
Monday 4th January – Saturday 16th January: Semester One Exams

SEMESTER TWO: 2020-2021

Monday 18th January – Saturday 20th February: Teaching
Sunday 21st February – Sunday 28th February: Winter Break
Monday 1st March – Saturday 17th April: Teaching
Sunday 18th April – Sunday 2nd May: Spring Break
Monday 3rd May – Tuesday 18th May: Semester Two Exams
Saturday 3rd July: Summer Holidays

4th June 2021: publication of exam results on the ENT

RESITS

Monday 14th June – Friday 2nd July: Semester One
and Semester Two Resits

Teaching	
Holidays and public holidays	
Exams	

SEMESTER 1

Septembre						
L	M	M	J	V	S	D
	1	2	3	4	5	6
7	8	9	10	11	12	13
14	15	16	17	18	19	20
21	22	23	24	25	26	27
28	29	30				

Octobre						
L	M	M	J	V	S	D
			1	2	3	4
5	6	7	8	9	10	11
12	13	14	15	16	17	18
19	20	21	22	23	24	25
26	27	28	29	30	31	

Novembre						
L	M	M	J	V	S	D
						1
2	3	4	5	6	7	8
9	10	11	12	13	14	15
16	17	18	19	20	21	22
23	24	25	26	27	28	29
30						

Décembre						
L	M	M	J	V	S	D
		1	2	3	4	5
6	7	8	9	10	11	12
13	14	15	16	17	18	19
20	21	22	23	24	25	26
27	28	29	30	31		

SEMESTER 2

Janvier						
L	M	M	J	V	S	D
				1	2	3
4	5	6	7	8	9	10
11	12	13	14	15	16	17
18	19	20	21	22	23	24
25	26	27	28	29	30	31

Février						
L	M	M	J	V	S	D
1	2	3	4	5	6	7
8	9	10	11	12	13	14
15	16	17	18	19	20	21
22	23	24	25	26	27	28

Mai						
L	M	M	J	V	S	D
					1	2
3	4	5	6	7	8	9
10	11	12	13	14	15	16
17	18	19	20	21	22	23
24	25	26	27	28	29	30
31						

Juin						
L	M	M	J	V	S	D
	1	2	3	4	5	6
7	8	9	10	11	12	13
14	15	16	17	18	19	20
21	22	23	24	25	26	27
28	29	30	1	2	3	

Mars						
L	M	M	J	V	S	D
1	2	3	4	5	6	7
8	9	10	11	12	13	14
15	16	17	18	19	20	21
22	23	24	25	26	27	28
29	30	31				

Avril						
L	M	M	J	V	S	D
			1	2	3	4
5	6	7	8	9	10	11
12	13	14	15	16	17	18
19	20	21	22	23	24	25
26	27	28	29	30		

PUBLIC HOLIDAYS 2020-2021

Sunday 1st November 2020: All Saints Day
 Wednesday 11th November 2020: Armistice Day
 Friday 25th December 2020: Christmas
 Friday 1st January 2021: New Year's Day
 Monday 5th April 2021: Easter Monday
 Saturday 1st May 2021: Labour Day
 Saturday 8th May 2021: Victory in Europe Day
 Thursday 13th May 2021: Ascension Day
 Monday 24th May 2021: Whit Monday
 Wednesday 14th July 2021: Bastille Day
 Sunday 15th August 2021: Assumption Day

4

PARIS 1 PANTHÉON-SORBONNE STUDY CENTRES

1 > **Campus Condorcet**
8, cours des Humanités
93300 Aubervilliers

2 > **Campus Port-Royal**
Centre Lourcine
1, rue de la Glacière
75013 Paris

3 > **Campus Port-Royal**
Centre René-Cassin
17, rue Saint-Hippolyte
75013 Paris

4 > **Centre 17 rue de Tolbiac**
17, rue de Tolbiac
75013 Paris

5 > **Centre Bourg-la-Reine**
16, boulevard Carnot
92340 Bourg-la-Reine

6 > **Centre Broca**
21, rue Broca
75005 Paris

7 > **Centre Cujas**
2, rue Cujas
75005 Paris

8 > **Centre de Nogent-sur-Marne**
45 bis, avenue de la Belle Gabrielle
94130 Nogent-sur-Marne

9 > **Centre Malher**
9, rue Malher
75004 Paris

10 > **Centre Panthéon**
12, place du Panthéon
75005 Paris

11 > **Centre Pierre-Mendès-France**
90, rue de Tolbiac
75013 Paris

12 > **Centre rue d'Ulm**
1, rue d'Ulm
75005 Paris

13 > **Centre Saint-Charles**
47-53, rue des Bergers
75015 Paris

14 > **Centre Sainte-Barbe**
4, rue Valette
75005 Paris

15 > **Galerie Colbert**
2, rue Vivienne
75002 Paris

16 > **Institut d'art et d'archéologie**
3, rue Michelet
75006 Paris

17 > **Institut de Géographie**
191, rue Saint-Jacques
75005 Paris

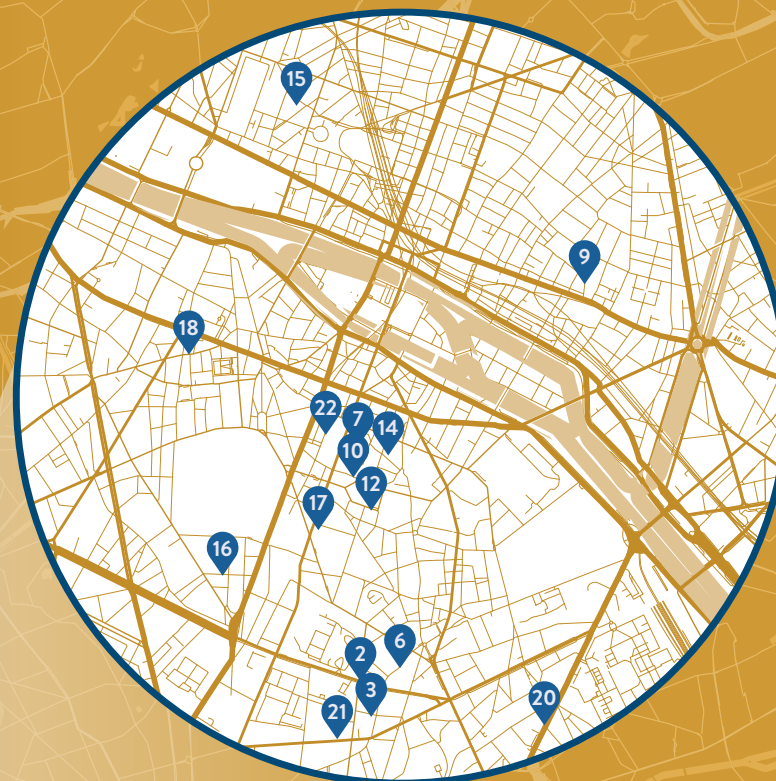
18 > **Maison de la Philosophie**
Centre Marin Mersenne
13, rue du Four
75006 Paris

19 > **Maison des Sciences**
de l'Homme Mondes
21, allée de l'université
92000 Nanterre

20 > **Maison des Sciences Économiques**
106-112, boulevard de l'Hôpital
75013 Paris

21 > **Maison Internationale (International**
Relations Department)
58, boulevard Arago
75013 Paris

22 > **Sorbonne**
17, rue de la Sorbonne
75005 Paris



4

ACRONYMS

APL

Aide Personnalisée au Logement (*Government Housing Grant*)

BU

Bibliothèque Universitaire (*University Library*)

CAF

Caisse d'Allocations Familiales (*Family Allocations Office*)

CC

Contrôle Continu (*Continuous Assessment*)

CEAM

Carte Européenne d'Assurance Maladie (*European Health Insurance Card*)

CM

Cours Magistral (*Lecture*)

CMU

Couverture Maladie Universelle (*Universal Health Coverage Scheme*)

CPAM

Caisse Primaire d'Assurance Maladie (*Health Care Insurance Fund*)

CROUS

Centre Régional des Œuvres Universitaires et Scolaires (*Regional University Services Centre*)

DAJI

Direction des Affaires Juridiques et Institutionnelles (*Institutional and Legal Affairs Services*)

DELF

Diplôme d'Études en Langue Française (*Certificate of French Language Studies, levels A1-B2*)

DALF

Diplôme Approfondi de Langue Française (*Certificate of French Language Studies, levels C1-C2*)

DDL

Département Des Langues (*Languages Department*)

DEVE

Direction des Enseignements et de la Vie Étudiante (*Teaching and Student Life Service*)

DIREVAL

Direction de la Recherche et de la Valorisation (*Research Valorisation Service*)

DRI

Direction des Relations Internationales (*International Relations Department*)

DU

Diplôme Universitaire (*Certificate of Higher Education*)

ECTS

European Credit Transfer System

ENT

Environnement Numérique de Travail (*Virtual Learning Environment*)

EPI

Espaces Pédagogiques Interactifs (*Interactive Learning Spaces*)

ESN

Erasmus Student Network

FLE

Français Langue Étrangère (*French as a Foreign Language*)

LMD

Licence Master Doctorat (*Bachelor's, Master's, PhD*)

PMF

Centre Pierre-Mendès-France

RATP

Régie Autonome des Transports Parisiens (*Public Transport Operator in Paris*)

RER

Réseau Express Régional (*Regional Express Network*)

RIB

Relevé d'Identité Bancaire (*Bank account details*)

RU

Restaurant Universitaire (*University Canteen*)

SAMU

Service d'Aide Médicale Urgente (*Emergency Medical Services*)

SCD

Service Commun de Documentation (*Library Services*)

SCUIO

Service Commun Universitaire d'Information et d'Orientation (*University Careers Service*)

SNCF

Société Nationale des Chemins de fer Français (*French National Railway Company*)

TCF

Test de Connaissance de Français (*French Language Test*)

TD

Travaux Dirigés (*Seminar*)

TP

Travaux Pratiques (*Practical Exercises*)

TER

Train Express Régional (*Regional Express Train*)

TGV

Train à Grande Vitesse (*High-Speed Rail Service*)

UE

Unité d'Enseignement (*Academic Module*)

UEFAPS

Unité d'Enseignement de Formation aux Activités Physiques et Sportives (*Sports and Physical Education Department*)

UFR

Unité de Formation et de Recherche (*Academic Department*)

VLS-T

Visa Long Séjour Temporaire (*Temporary Long-Stay Visa*)

VLS-TS

Visa Long Séjour valant Titre de Séjour (*Long-Stay Visa Valid as a Residence Permit*)

4

CONTACTS

INTERNATIONAL RELATIONS DEPARTMENT

ADDRESS

58 boulevard Arago
75013 Paris

OPENING HOURS

Visit our international website for more information:
<https://international.panthéonsorbonne.fr>

Front Desk

international-contact@univ-paris1.fr
01 87 03 02 10

EMERGENCY NUMBERS

- > Emergency Services: 112
- > SAMU (ambulance service): 15
- > Fire service: 18
- > Police: 17
- > SOS Médecins (emergency doctor service): 36 24
- > Poison Control Centre: 01 40 05 48 48
- > Lost and found: 34 30

Incoming Exchange Student

Mobility

incoming-exchange@univ-paris1.fr
01 87 03 02 22

Housing

international-housing@univ-paris1.fr
01 87 03 02 29

Orientation Week

orientationweek@univ-paris1.fr
01 87 03 02 29

Incoming Full Degree Mobility

incoming-fulldgree@univ-paris1.fr
01 87 03 02 20

PARIS 1 PANTHÉON-SORBONNE

Switchboard

01 44 07 80 00

Telephone Helpline (enrolment)

01 71 25 11 37
(+33 1 44 07 89 45 from abroad)

Welfare Services

01 40 51 11 35

Health Services

01 44 07 89 50

Disability Services

01 44 07 78 13

4

CHECK-LISTS

BEFORE YOU ARRIVE

REMEMBER TO BRING:

- ☐ An identification document (+ a birth certificate translated into French for incoming full degree students)
- ☐ Your admission letter to Université Paris 1 Panthéon-Sorbonne
- ☐ A photocopy of your secondary school qualification certificates
- ☐ A photocopy of your last qualification certificate
- ☐ A bank document displaying your bank details

TO-DO:

- ☐ Apply for a visa in your local French consulate in your country of residence (for non-European students)
- ☐ Apply for your European Health Insurance Card (for European students only)
- ☐ Remember to take enough cash and/or a bank card with you to cover your initial costs once in France
- ☐ For disabled students: remember to bring your medical documents with you, preferably with a French translation

WHEN YOU ARRIVE

- ☐ Validate your VLS-TS online (for non-European students)
- ☐ Open a bank account
- ☐ Take out a housing insurance policy as soon as you have an address in France
- ☐ Register with the CPAM if you are a student without a European Health Insurance Card
- ☐ Obtain proof of public liability insurance (you can get this from your insurer, a mutual, or a bank)
- ☐ Obtain proof of payment of the CVEC or exemption from having to pay this (for students to whom this applies)
- ☐ Proceed to administrative enrolment
- ☐ Activate your ENT account
- ☐ Get in touch with the delegate teacher of your academic department or institute, who is responsible for modifying or validating your learning agreement (for exchange programme students)
- ☐ Proceed to academic enrolment



International Relations Department

58 boulevard Arago – 75013 Paris – France

international.panthéonsorbonne.fr