



PANTHÉON SORBONNE
UNIVERSITÉ PARIS 1



2024 > 2025

International Student Welcome Guide

Table of contents

1 ▾

Paris 1 Panthéon-Sorbonne University

P6 About the University

P8 Key Figures

2 ▾

Studying in Paris

P12 **Administrative Procedures**
> Visas and Residence Permits
> Accommodation
> Health
> Banks

P22 **Living in Paris**
> Budget
> Working in France
> Getting Around
> Going Out

3 ▾

University Life

P34 **Organisation of Studies**

P36 **Becoming a Student at Paris 1 Panthéon-Sorbonne**
> Enrolment
> Orientation

P40 **Ressources**
> IT Services
> Libraries

P45 **University Commitments**
> Disability
> Incident Reporting
> Sustainable Development

P47 **Societies and Cultural Activities**
> Clubs and Societies
> Cultural Activities

P50 **Sports**

P52 **Eating**

4 ▾

Practical Information

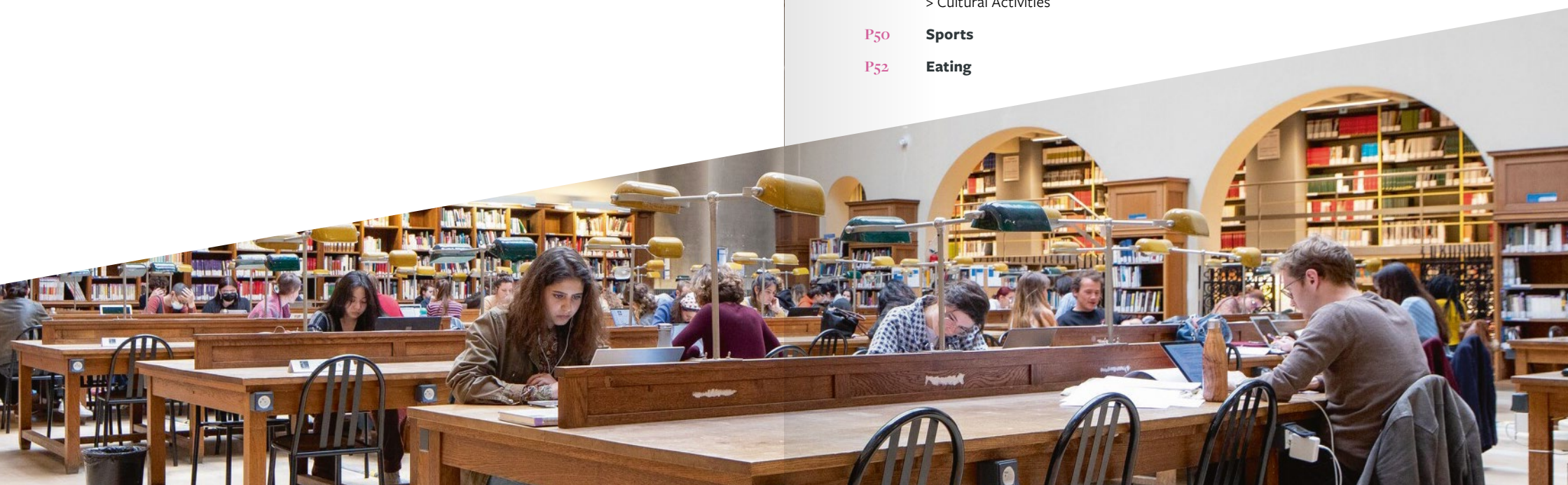
P56 **University Calendar**

P60 **Paris 1 Panthéon-Sorbonne Locations**

P62 **Acronyms**

P64 **Contacts**
> International Relations Department
> Paris 1 Panthéon-Sorbonne
> Emergency Numbers

P65 **Check-lists**



1▼

Paris 1 Panthéon-Sorbonne University

P6 About the University

P8 Key Figures



About the University

Paris 1 Panthéon-Sorbonne University was founded in the 13th century as the Collège de la Sorbonne by Robert de Sorbon and is located in the heart of the capital's Latin Quarter. It is one of the oldest French universities, renowned throughout the world. The present-day university has combined tradition with modernity since its establishment in 1970.



Three Major Disciplinary Areas

Paris 1 Panthéon-Sorbonne University offers courses in three disciplinary areas: economics and management, arts and humanities and law and political science. This broad range of courses makes Paris 1 Panthéon-Sorbonne the largest French university in humanities and social sciences, in terms of both the variety of subjects taught and the number of students.

Paris 1 Panthéon-Sorbonne University has always emphasised interdisciplinary education and research. Today the university offers a number of innovative double degrees at both bachelor's and master's levels with excellent reputations in France and abroad.

Paris 1 Panthéon-Sorbonne University is very well placed in several international rankings. It particularly stands out in the latest 2024 QS World University Rankings by subject, where nine of its academic fields are ranked in the global top 50.

A Research-Driven University

Teaching and research are intrinsically linked at Paris 1 Panthéon-Sorbonne University. As with teaching, research is also structured around three major disciplinary areas with 37 research units (24 of which are in partnership with the French National Centre for Scientific Research and/or the National Research Institute for Sustainable Development) and 10 doctoral schools. Every year, more than 300 PhD theses and HDR (habilitations to supervise research) are defended at the university.

International Outlook

20% of the university's 45,000 students are international students enrolled across the institution's 10 academic departments and four institutes. Internationalisation of teaching and research at Paris 1 Panthéon-Sorbonne is constantly increasing thanks to strong historic links with a large number of global institutions (over 300 partners in 65 countries) and the university's involvement in a number of networks.

This great international presence makes it possible for Paris 1 Panthéon-Sorbonne University to offer international joint supervision of PhDs, Erasmus Mundus programmes, joint degree programmes, and many delocalised degrees within foreign partner universities.

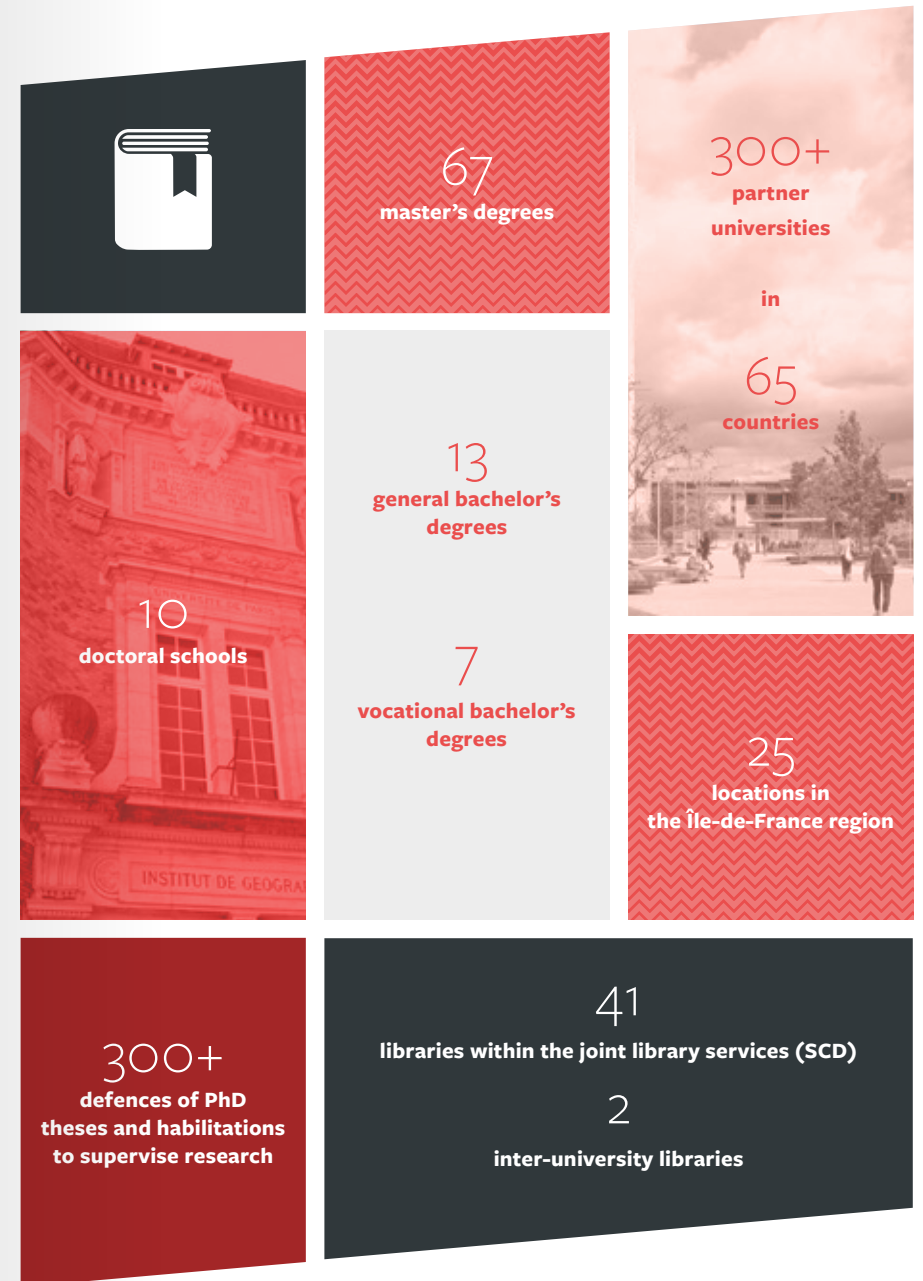
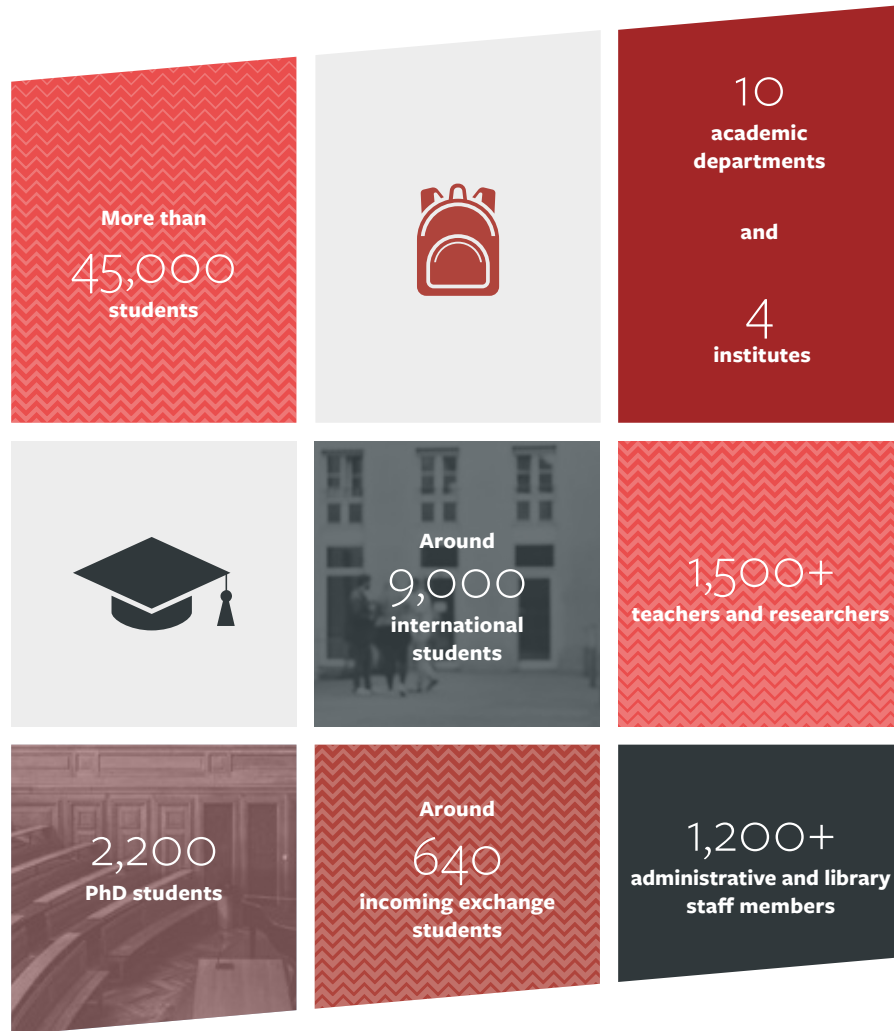


Paris 1 Panthéon-Sorbonne is a founding member of the European university alliance Una Europa alongside 10 other leading European higher education and research institutions. The Una Europa partners have selected six focus areas to launch their collaboration in teaching, education and research: Europe and the world, sustainability, cultural heritage, data science and artificial intelligence, health, and future materials.

In 2020, Paris 1 Panthéon-Sorbonne University was awarded the "Bienvenue en France – Choose France" label (two-star level), which certifies the quality of its actions carried out to improve the hospitality and the integration of international students.



Key Figures



2 ▾

Studying in Paris

P12 Administrative Procedures

- > Visas and Residence Permits
- > Accommodation
- > Health
- > Banks

P22 Living in Paris

- > Budget
- > Working in France
- > Getting Around
- > Going Out



Administrative Procedures



Visas and Residence Permits

If you are not from one of the European Union member states; one of the European Free Trade Association countries (Iceland, Liechtenstein, Norway, Switzerland); Andorra; Monaco; San Marino or the Vatican City; then you must obtain a visa in order to come and study at the university. You must complete this procedure before your arrival in France. Visit the France-Visas website to find out which visa to apply for depending on your situation and your stay.

THE DIFFERENT TYPES OF VISA FOR STUDYING IN FRANCE

Visas Valid for Three Months and Above (long-stay visas)

Long-stay visas valid as a residence permit for students (VLS-TS student visas)

allow you to study in France for a period of four to twelve months. Upon expiry of this visa you must request a residence permit in order to stay in France.

Temporary long-stay visas (VLS-T student visas)

allow you to study in France for a period of four to twelve months. This type of visa cannot be renewed.

Long-stay visas with the following clause: “residence permit must be requested within the first two months following arrival in France”

you will have to go to the prefecture within two months in order to obtain a residence permit.

Visas Valid for Less than Three Months (short-stay visas)

Short-term visas for students sitting examinations

are only for non-European students and are only valid for travel in France. This visa allows you to come to France to sit a French higher education admission interview or entrance examination. Please note that short-stay visas for students sitting examinations can only be awarded if the results of the selection process will be known within three months of candidates sitting entrance examinations and admissions interviews.

Short-term Schengen visas

are valid for a maximum of a 90-day period for use within the Schengen area. This can be either used for an uninterrupted period of 90 days or several periods totaling 90 days within a 180-day period. You may be exempt from this visa depending on your nationality or situation.

Short-term Schengen visas are valid for business or leisure purposes, which could include a short course, an internship or a paid position (providing the holder has obtained the right to work). Schengen

single-entry visas are only valid for a single trip. Schengen single-entry and multiple-entry visas allow you to travel around the Schengen area for a fixed period of six months to five years.

Visa Application Procedure

Before departing for France you must request a visa from the French consulate in your country of residence. You must present proof of university admission in France, proof of means and proof that you have accommodation reserved in France (*attestation d'hébergement*).

If you live in a country with an “Études en France” procedure, then you can apply for a visa through Campus France online in your area of residence.

FOLLOWING YOUR ARRIVAL IN FRANCE

Long-Stay Visa Holders

If you hold a long-stay visa valid as a residence permit (VLS-TS)

if this is your first application, you have three months to take the necessary steps. You will have to validate your visa online by logging on the ANEF website (administration-etrangers-en-france.interieur.gouv.fr).

Visa Certification Process

In order to validate your VLS-TS online, you will need a valid email address, the information on your visa, your date of arrival in France, your address in France and a payment card to pay the tax online.

If you do not have a payment card, you can buy an electronic stamp from a tobacco shop and pay in cash.

Once you have completed the online procedure, you will receive by email your login details to access your account and obtain confirmation of validation of your VLS-TS. A second email that can be downloaded will confirm the information that you filled in online.

If you hold a Temporary Long-Stay Visa (VLS-T)

▼
you do not need to get your visa certified at a prefecture when you arrive. You are not required to take any further steps in relation to your visa. VLS-T visas cannot be renewed and it is not possible to have this kind of visa extended. You must leave France when this visa expires.

Short-Stay Visa Holders

If you are the holder of a short-term visa for students sitting examinations

▼
and you obtain a place to study in France you can apply for a study residence permit at a prefecture without having to return to your country of residence. If you are unsuccessful, you must leave France as soon as the results of your examination/admission are published.

If you are the holder of a short-term Schengen visa

▼
there are no formalities required upon arrival or departure. At the end of the 90-day period you must leave the Schengen area. The Schengen short-stay visa is renewable, however you must wait six months before submitting a new application. Unlike with a long-stay visa, this visa does not allow you to take up residence in France.

Keep in mind

Tourist visas cannot be converted to student visas or student residence permits in France or any European Union member state.

If you hold a long-stay visa with the following clause: “residence permit must be requested within the first two months following arrival in France”

▼
then you must imperatively apply for a residence permit at your local prefecture no more than two months following your arrival in France.

Contact

titredesejouretudiant@univ-paris1.fr

Useful Website

France-Visas:
france-visas.gouv.fr/web/france-visas/accueil

Accommodation

Finding accommodation in the Île-de-France region is not an easy task and can take some time. It is recommended that you plan ahead as much as possible. Every student is responsible for finding their own accommodation and, if necessary, look for temporary housing for the start of the academic year.

Paris 1 Panthéon-Sorbonne University has some accommodation units within university halls of residence that it allocates to exchange students. However, being accepted and enrolling at Paris 1 Panthéon-Sorbonne does not guarantee any student with an offer of university accommodation.

Paris 1 Panthéon-Sorbonne University will not issue proof of accommodation documents in advance and requires you to complete all necessary consular processing procedures beforehand. However, a proof of temporary address is sufficient.

To help you in your search, Paris 1 Panthéon-Sorbonne offers a range of accommodation options. Unfortunately, these options are too limited to meet all demand.



ACCOMMODATION RESERVED FOR FOREIGN STUDENTS ON EXCHANGE PROGRAMMES

The accommodation options below are exclusively available to foreign students taking part in exchange programmes.

This type of accommodation is allocated by the International Relations Department (DRI) of Paris 1 Panthéon-Sorbonne University according to demand and availability. You will be contacted in June and December in order to apply for an accommodation. If you have a disability, please let us know so that we can take it into account in your application.

Paris Crous

Every year, Paris 1 Panthéon-Sorbonne University has some Paris Crous accommodation for allocation from the beginning of September to the end of June. Rent is between €250-550/month depending on the type of accommodation.

Cité internationale universitaire de Paris (CiuP)

Paris 1 Panthéon-Sorbonne has several accommodation units available at the *Cité internationale universitaire de Paris* (CiuP). Rent is between €670-780/month depending on the type of accommodation. This accommodation is allocated exclusively to foreign students participating in a master's or PhD level exchange programme. Selected students will receive a partner code in order to complete their application.

Please note that these two organisations may also charge a non-refundable reservation fee.



ACCOMMODATION FOR ALL FOREIGN STUDENTS (EXCHANGE PROGRAMME AND NON-EXCHANGE PROGRAMME)

These accommodation options are open to all foreign students enrolled at Paris 1 Panthéon-Sorbonne University.

Cité internationale universitaire de Paris (CiuP)

If you are a foreign master's student you can apply directly to the *Cité internationale universitaire de Paris* (CiuP) through their website. In this case, you must not specify a partner code in the application form.

Studapart

The Studapart online platform is a partner of Paris 1 Panthéon-Sorbonne and allows students to view advertisements for various types of accommodation (private accommodation, university halls, estate agent offers).

If you are interested in this accommodation opportunity, you must get in touch with the International Relations Department as soon as you are able to provide a document proving your acceptance at Paris 1 Panthéon-Sorbonne.

The Student Life Service of Paris 1 Panthéon-Sorbonne has also developed various partnerships to assist you in your student house hunting. Visit their Facebook page for more information.

Contact

international-housing@univ-paris1.fr

Useful Websites

Crous:

www.crous-paris.fr/se-loger

CiuP:

www.ciu.p.fr/en

Studapart:

pantheonsorbonne.studapart.com/en/

ADMINISTRATIVE PROCEDURES

Housing Insurance

Whether you are living in a Crous residence, at the CiuP or in a privately rented accommodation, you must take out housing insurance from an insurance company or a bank.

Housing insurance will cover damage in your accommodation in the event of burglary, fire or water damage for example. This insurance is mandatory and is the responsibility of the tenant. The rate of insurance varies depending, amongst other factors, on where your accommodation is located, its size and the total value of your possessions.

The insurer with whom you take out your policy can provide you with a certificate of civil liability. You will need this document in order to complete your administrative enrolment at the university. The certificate of civil liability will provide you with third-party insurance and personal possessions cover. The civil liability certificate can also be obtained via a mutual insurance company.

Security Deposit

When you sign your lease (or accommodation contract) the landlord will usually ask for a security deposit. This is a sum of money that the landlord will keep for the duration of the rental in the event of any breaches in contract on behalf of the tenant, such as missing rent payments or damage to the property. This will normally be returned to you providing there are no breaches of contract.

Guarantor

Landlords often ask tenants to prove that they have a guarantor who will pay their rent in the event of lapsed payments. A guarantor is generally a relative of the tenant, although this person can be a friend, who will commit to paying the tenant's rent in the event that he/she is unable to do so. If you do not have a relative who can act as a guarantor for you then there are various specialist agencies you can consult.

The *Action Logement* group created a free type of guarantee for tenants called "Visa for Housing and Work" (Visale) that will cover the cost of rent in the event of deferred payments. Garantme also offers to students without a suitable guarantor a guarantee service for which you have to pay.

Personal Housing Assistance Fund (APL)

The Personal Housing Assistance Fund (APL) is a means-tested housing benefit that is awarded to help with covering the cost of rent.

You can apply to an APL benefit through the CAF (*Caisse d'Allocations Familiales*). The rate at which APL is paid varies depending on a number of factors, such as the location and size of your accommodation, and your financial resources. You can use the online CAF grant calculator to find out if you are eligible and the size of the benefit for which you could qualify.

Useful Websites

Visale: www.visale.fr

Garantme: garantme.fr/en

Campus France: www.campusfrance.org/en/student-housing-france

CAF: www.caf.fr

Social security affiliation is free and obligatory for all students in France, whether they are French or foreign nationals.

SOCIAL SECURITY

Why?	When?	How?	How much?
To get a portion of my healthcare cost reimbursed (medical consultations, medical tests, etc.).	As soon as possible after enrolling at Université Paris 1 Panthéon-Sorbonne.	By going to the ameli website aimed at foreign students, which is available in both French and English.	It's free. Social security registration in France is free for all students, including French and foreign nationals.

I need to register if:

- > I am a European student without a European Health Insurance Card (EHIC).
- > I am a European student with an S1 form.
- > I am not a European student.

I don't need to register if:

- > I am European and I have a European Health Insurance Card (EHIC) or a temporary certificate. My medical costs will be reimbursed at the same level as they would be in my home country. This card must be valid until the end of the current academic year.
- > Regardless of my nationality, I have already been enrolled at a French higher education establishment. I check with the *Caisse primaire d'assurance maladie* (CPAM) that I am properly affiliated.

Students who are nationals of a European country, Iceland, Liechtenstein, Norway, the United Kingdom or Switzerland can apply for an EHIC card. These students do not have to register with French social security. You should apply for an EHIC card in your home country. An EHIC card will allow you to access medical care in France.

What is an S1 form?

The S1 form is only for citizens of the European Union, the European Economic Area (EEA) and Switzerland.

It is a document that you can apply for in your home country before departure at the health organisation with which you are registered. This document allows you to register for social security purposes in France.

There are reciprocal agreements linking France social security institutions and those in other countries. To find out more about these agreements please consult the *Centre des Liaisons Européennes et Internationales de Sécurité Sociale* (CLEISS) website.

HEALTH INSURANCE COOPERATIVES AND TOP-UP INSURANCE

In order to increase your health insurance payouts you can also register with a health cooperative or for top-up insurance.

How do I register with a health insurance cooperative?

You are advised to register with a health insurance cooperative in order to increase your health insurance payouts, however this is not obligatory. You can ask for a quote and compare rates of different student health insurance companies, insurance companies and banks. Some health insurance cooperatives may also offer personal liability insurance, which will allow you to be covered in your place of study or internship.

CONSULTATIONS

How can I see a doctor?

Paris 1 Panthéon-Sorbonne University has its own health service called the *service de Santé étudiante* (SSE) through which a team of doctors, psychologists and nurses advise students and provide individual consultations for prevention and information on health, contraception and nutrition. The psychologists are available for students free of charge and by appointment. The university's Relais handicap receives, informs and supports disabled students in their studies. The university is also a partner of Nightline, a night-time helpline entirely dedicated to students who feel the need to talk.

You can also look up a doctor outside not affiliated with the university and make an appointment online or with the Doctolib mobile application.

You can receive free and confidential consultations from the *Planning familial* if you have questions about sexuality, intimate relationships or contraception methods. Women can access prescriptions for a variety of contraception methods through the *Planning familial*. The *Planning familial* has branches all over France.



Useful Websites

Ameli for foreign students:
etudiant-etranger.ameli.fr

CLEISS: www.cleiss.fr

Nightline: www.nightline.fr

Doctolib: www.doctolib.fr

University webpage about health services:
pantheonsorbonne.fr/vie-etudiante/sante

Relais handicap : pantheonsorbonne.fr/vie-etudiante/relais-handicap

Planning familial:
www.planning-familial.org

€ Banks

The right to hold a bank account is written in French law. Foreign students in France can therefore open a bank account in any bank in France. Most major banks have branches in most towns. To open an account all you have to do is make an appointment with an in-branch adviser.

Opening a bank account will make daily life easier, in particular when paying bills (electricity, telephone, rent) and subscriptions (transport, internet). With a bank account you can also keep track of salary and health insurance payments more easily. A French debit card also allows you to pay for most things and prevents you from having to carry around large sums of cash. You can easily set up standing orders for your various subscriptions using your RIB (*Relevé d'identité bancaire*).

Your bank statements can act as proof of means in France when it comes to renewing your resident permit.

The cost of having a bank card, international bank transfers, and withdrawing money abroad can vary noticeably between one bank and another so it is advised that you compare banks before taking out an account.

You must have (at least) the following three documents with you in order to open a bank account: a piece of identification, proof of address and an attendance certificate or student card.

If you have difficulty opening a bank account there is a procedure called “*droit au compte*” that you can go *via*. In the event of this the *Banque de France* (Bank of France) will indicate a bank that will be obliged to provide you with a bank account. Details of this procedure, as well as the documents you have to provide and contacts of various organisations offering help with this procedure are on the *Banque de France* website.

Useful Website

Banque de France:
particuliers.banque-france.fr/votre-banque-et-vous/droit-au-compte/jai-besoin-dun-compte-bancaire



Living in Paris

€ Budget

COST OF LIVING

The figures below must only be taken as a guide and can vary.

Accommodation



(Rent per month)

Studio at the Crous:	€250-€550
Studio at the CiuP:	€670-€780
Private studio:	€800

Electricity and water per month:	€50-€100

Food and Restaurants



Meal at university canteen:	€1-€3,30
Meal in restaurant:	€15-€25
Sandwich:	€4-€6
Coffee:	€2-€3
Baguette:	€1-€1,30
Pastry:	€1-€2

Transport



Monthly travel pass:	€86,40
Metro ticket:	€2,15
Student annual travel pass:	€382,40
On-board bus ticket:	€2,50

Telephone & Internet



(contract per month)	
Mobile phone:	€15-€20
Internet-TV:	€30-€40

Entertainment



Cinema ticket:	€7-€15
Exhibition entrance:	€5-€20
Swimming pool entrance:	€2-€3,50

Financial support

If you are experiencing financial difficulties, please get in touch with the Student Life Service to discuss your situation and consider applying for financial assistance: fsdie-social@univ-paris1.fr.



Working in France

French law allows the majority of foreign students to work 964 hours a year, or the equivalent of 60% of the legal working hours limit. Students can therefore only earn a partial salary. Depending on your situation, you may need to apply for a work permit. This application can be made using the ANEF online platform of the French Ministry of the Interior.



Completing an internship can be mandatory as part of the preparation for some degrees. French and foreign students are subject to the same rules:

- > The internship must be contractual (an agreement must be signed between the university and the host organisation).
- > A minimum wage rate of €4.35 per hour of internship is compulsory if your work placement lasts more than two consecutive months (or from the 309th hour of internship).

The Jobaviz free to use platform run by the Crous is an employment hub aimed at students, allowing them to find job opportunities that correspond to their studies and experience.

www.jobaviz.fr

The CIDJ (*Centre d'Information et de Documentation Jeunesse*), or Youth Information and Resource Centre, advertises a selection of job opportunities including student jobs.

www.cidj.com

RéseauPro is an online platform for the university's students and graduates where they can find internship and job offers.

reseaupro.univ-paris1.fr

Getting Around

PARIS AND THE ÎLE-DE-FRANCE REGION

An extensive five-zone public transport network serves Paris and the Île-de-France region and includes metro, bus, tram, regional express train (RER), and regional train (Transilien) links. The RATP group is responsible for operating the majority of public transport services in Paris and the surrounding area.

If you would like to take out a subscription you have a choice between:

> **The “*imagine R Étudiant*” subscription:** annual subscription aimed at students under 26 living in the Île-de-France region for unlimited journeys around the entire region (all zones: €382.40 per year, including handling fee).

> **The monthly “*Navigo*” subscription:** monthly subscription for unlimited journeys in all zones (€86.40/month)

Metro, Bus and Tramway

The price of a t+ ticket is €2.15 for one journey. You can buy it via the Île-de-France Mobilités mobile app or load it on the *Navigo Easy* pass that can be purchased in all counters/stations for €2. The t+ ticket is valid on all RER and train networks in Paris, and all metro, tram and bus services.

You can also subscribe to the *Navigo Liberté +* service and travel using a pay-per-use card. You will be charged the following month based on the journeys you have made. By using this service, you can benefit from a single rate of €1.73 per journey.

> **Metro** is the fastest, least expensive and most simple means of transport in Paris. The metro network is made up of 16 lines and more than 300 stations across Paris and its suburbs. On weekdays, services begin around 5.30am and finish around 1.15am. On Friday and Saturday evenings, as well as on the eve of public holidays, services finish at 2.15am at the latest.

> **The bus** is an excellent way to discover Paris. Bus lines in Paris for the most part run from Monday to Sunday. Services may decrease on Sundays and holidays depending on the line.

> **Noctilien** is a bus service with 47 lines that allows you to get around in Paris and the Île-de-France region between 12.30am and 5.30am.

> Four of the **14 tram lines of Île-de-France** serve Paris: the T2, T3a, T3b and T9. Tram tickets are the same as metro and RER tickets within Paris.



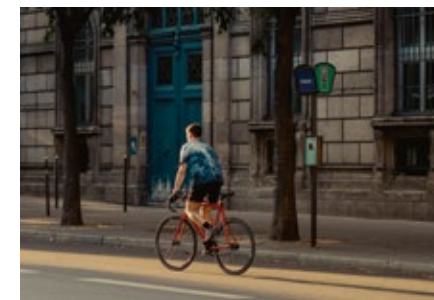
RER and Transilien

The RER network is made up of five lines (A, B, C, D, and E) that serve Paris and the Île-de-France region. Ticket prices are the same as for metro tickets when travelling within central Paris. Otherwise, the price of a ticket depends on your destination within the Paris region.

Transilien trains are regional trains that depart from Paris' major stations: the Gare du Nord, Gare de l'Est, Gare de Lyon, Gare d'Austerlitz, Gare Montparnasse and the Gare Saint-Lazare.

Cycling

Vélib' is the Paris bike-sharing system. In order to use the Vélib' mechanical and electric bikes, you can choose from several types of passes (single ride, 1 day or 3 days) and subscriptions with or without commitment. Île-de-France Mobilités offers residents of the Île-de-France region a long-term rental service of e-bikes called “Véligo Location”. The rate and duration of rental and subscription vary depending on the type of bike.



IN FRANCE AND ABROAD

By Plane

Paris is served by three international airports:

> Charles de Gaulle Airport (CDG)

RER B (Aéroport Charles de Gaulle 1 station for terminals 1 and 3 and Aéroport Charles de Gaulle 2-TGV station for terminal 2)

TGV (Gare Aéroport Charles de Gaulle 2-TGV)

RATP bus: lines 350 and 351

Noctilien bus: lines N140 and N143

Roissybus

> Paris-Beauvais Airport (BVA)

Paris-Beauvais Shuttle (Porte Maillot station)

> Paris Orly Airport (ORY)

Metro: line 14

RER B + “Orlyval” shuttle train, or **RER C** + bus line 183

Noctilien bus: lines N22, N31, N131 and N144

Orlybus

Tram (line T7) + **metro** (line 7)

Tram (line T9) + **bus** (line 183)

Regional express train (TER) (Paris Gare du Nord) + **bus** (line 6)

By Train

The French train network is very well developed. In general, the train is the fastest means of transport and the most practical for traveling in France. The extensive TGV network (*Train à Grande Vitesse*) is the country's most efficient train service. SNCF is the country's national rail company.

SNCF stations in Paris:

Paris Austerlitz

Paris Est

Paris Gare du Nord

Paris Montparnasse

Paris Saint-Lazare

Paris Bercy Bourgogne – Pays d'Auvergne

Paris Gare de Lyon

By Coach

For a more leisurely and cost-effective option, the bus is a practical means of travelling around France. Several coach companies provide services from Paris to many other French and European cities.

Useful Websites

Île-de-France Mobilités:

www.iledefrance-mobilites.fr/en

RATP: www.ratp.fr/en

Transilien: www.transilien.com/en

Vélib' Métropole:

www.velib-metropole.fr/en

SNCF: www.sncf-connect.com

Véligo: veligo-location.fr



Going Out

Paris is the world's number one cultural destination: welcoming, cosmopolitan and with an impressive cultural heritage. In the QS Best Student Cities 2024 ranking, Paris was selected as the 3rd best student city in Europe and the 6th best in the world.

Paris is alive with exhibitions, shows, festivals and sports events all year round. Art, architecture, fashion, food and crafts are constantly being reinvented in the heart of the French capital.

In every neighbourhood of Paris there are unmissable attractions, secret gardens and hidden gems, on the hill of Montmartre to Montparnasse, the Latin Quarter to the Canal Saint-Martin and on the quays of the Seine.

Key Figures:

3 operas

741 cinema screens

141 museums

33 cabarets

2,230

historical monuments

Source: "Le Tourisme à Paris - Chiffres clés 2022" - Paris je t'aime - Tourist Office

MUSEUMS AND MONUMENTS

With over 140 museums, Paris has one of the most varied cultural scenes in the world in terms of the art forms represented and themes presented. Painting, sculpture, photography, contemporary art and science is constantly being produced in response to a wide range of themes to engage all tastes.



Free Admission for Under 26s

Access to permanent collections in almost 50 of the museums and monuments in Paris and the Île-de-France region is free for young people under 26 who come from one of the European Union member states (Louvre Museum, Musée d'Orsay, Palace of Versailles, etc.). There is also a reduction for temporary exhibitions in most museums.

Museums with Free Admission

It is free for everyone to visit the permanent collections in 11 of the 14 City of Paris' museums all year round only the Île de la Cité Archeological Crypt, the Catacombs of Paris and the Palais Galliera have entrance fees.

A Few Must See Destinations

Arab World Institute

Arc de triomphe

Catacombs of Paris

Cinémathèque française

Cité de l'architecture et du patrimoine

Cité des sciences et de l'industrie

City of Paris Museum of Modern Art

Eiffel Tower

Grand Palais

Louis Vuitton Foundation

Louvre Museum

Maison européenne de la photographie

Musée d'Orsay

Many other museums are free all year round, such as the Musée du Parfum Fragonard, the Shoah Memorial and the Curie Museum.

Musée de l'Orangerie

Musée de la musique - Philharmonie de Paris

Musée des Arts décoratifs

Musée du quai Branly - Jacques Chirac

Musée Picasso

Musée Rodin

National Museum of Natural History

Palace of Versailles

Palais de Tokyo

Panthéon

Petit Palais

Pompidou Centre

Our Selection:

National Library of France (BnF)

Gaîté Lyrique

Musée Carnavalet

Musée des Archives nationales

Pavillon de l'Arsenal



You can also wander freely around the capital's 530 public parks, gardens and squares. The only difficulty is choosing between The Bois de Vincennes or The Jardin du Luxembourg, The Buttes-Chaumont or the Jardin des Plantes.

Outside of Paris, there are many getaway destinations within an hour and a half's reach to rival what you can find in the capital. Following the trail of the Impressionists at Auvers-sur-Oise or Giverny, visiting one of the region's many castles such as Vaux-le-Vicomte or Fontainebleau, or even discovering the Villa Savoye designed by architect Le Corbusier in Poissy - the possibilities are endless.

EVENTS

You can find below a selection of unmissable cultural and sporting events held in Paris each year. These events may be subject to rescheduling in the event of exceptional circumstances.

European Heritage Day: *third weekend in September*

Free or reduced entrance to iconic sites that are not often open to the public for one-off visits.

Chinese New Year: *sometime between the end of January and the beginning of February*

See traditional costumes and displays passing through the heart of Paris' Chinatown in spectacular processions.

Printemps du cinéma: *beginning of Spring*

Benefit from cinema tickets at €5 for all films across all participating cinemas for a period of three days.

Paris Marathon: *April*

One of the world's biggest marathons, bringing together more than 50,000 runners.

European Night of Museums: *third Saturday of May*

Chance to visit Parisian museums at night and attend one-off demonstrations.

Roland-Garros - The French Open: *end of May - beginning of June*

The world's biggest clay surface tennis tournament.

Nuit Blanche in Paris: *first Saturday in June*

Art installations open for all-night viewing until dawn in public spaces and Parisian buildings.

Fête de la musique: *21st June*

Free street and garden concerts, as well as concerts in squares, stations and bars.

Fête du cinéma: *end of June - beginning of July*

Benefit from cinema tickets at €5 for all films across all participating cinemas during several days.

Bastille Day: *14th July*

Fireworks are launched off the Eiffel Tower to celebrate the country's national day.

Paris Plages: *from the start of July till the end of August*

Sand, deckchairs, palm trees and organised activities along the banks of the Seine and the Bassin de la Villette.

THEATRES

With more than 300 performances a week and 130 performance spaces, Paris has a huge variety of plays running throughout the year.

Several private theatres in the capital offer €10 entrance to young people under 26 with support from the City of Paris on Tuesdays, Wednesdays and Thursdays, subject to availability.

The *Comédie Française* is the quintessential French theatre and offers tickets to under-28 without reservations an hour before showtime on Mondays.

CINEMA

Paris is one of the cities with the highest density of cinemas in the world. With almost 80 cinemas in the French capital, the programme is highly diversified, with several hundred films on every week and new releases every Wednesday. Most cinemas show foreign films in their original version with French subtitles.

“Lost in Frenchlation” offers non-French speakers the opportunity to discover typically French films with English subtitles in independent cinemas across Paris. The screenings come with debates in English as well as cocktails and other special activities.

Most cinemas in Paris offer reduced tickets to students and young people under 26. In some cinemas entrance for morning screenings is available at a reduced price.

TOP TIPS

Kiosque Jeunes

Kiosque Jeunes is a scheme put in place by the City of Paris opening up a variety of cultural activities available to 13 to 30 year olds, including concerts, plays and sporting events.

In order to benefit from these offers you simply have to make a Parisian account on **moncompte.paris.fr** and then create and activate your profile on **kiosquejeunes.paris.fr/kiosquejeune**.

You will be able to book up to two tickets per day to attend an event from a large online offer. The Kiosque is open from Tuesday to Saturday from 11am to 12.30pm and from 1.30pm to 6pm, and is located at *Quartier Jeunes* (QJ), 4 place du Louvre (75001).

Pass Jeunes

From the beginning of June to the end of September, 14-25 year-olds from Paris and the Seine-Saint-Denis area can get free or reduced access to a large selection of cultural, sporting and leisure activities with the *Pass Jeunes*. This little booklet is completely free and contains coupons for exhibitions, monuments, opera and cinemas.

To receive a *Pass Jeunes* (subject to available stocks) you must reserve it online at **passjeunes.paris.fr** and then collect it from a pick-up point.

Useful Websites

L'Officiel des spectacles (weekly cultural guide to Paris): www.offi.fr

Que faire à Paris: quefaire.paris.fr

Paris Tourist Office: parisjetaime.com/eng/

Paris Jeunes Facebook page: www.facebook.com/ParisJeunes

3

University Life

P34 Organisation of Studies

**P36 Becoming a Student at Paris 1
Panthéon-Sorbonne**

- > Enrolment
- > Orientation

P40 Ressources

- > IT Services
- > Libraries

P45 University Commitments

- > Disability
- > Incident Reporting
- > Sustainable Development

P47 Societies and Cultural Activities

- > Clubs and Societies
- > Cultural Activities

P50 Sports

P52 Eating



Organisation of Studies

France, like most European countries, joined the Bologna Declaration (1999), which is considered to be the starting point for the construction of European higher education space.

European countries decided to harmonise the European higher education system in order to ensure the recognition of qualifications across Europe and support student, staff and researcher mobility. The current system rests on several key principles.



A THREE-TIER CURRICULUM

Bachelor's

In France undergraduate degrees are taken over three years, or six semesters.

Master's

After completing an undergraduate degree, students can study for a master's degree over two years (or four semesters) that can be taken immediately after a bachelor's degree or can be part of a programme of lifelong learning. Master's qualifications are designed to:

- > prepare students for research careers;
- > prepare students to take an advanced qualification and find employment at a high level.

PhD

Upon completion of a master's, students can enrol to begin doctoral studies. All students who hold a master's degree can apply to study for a PhD, whether they hold a master's degree, an engineering degree, or have a master's level qualification from a business school.

On average, doctoral studies last for three years.

THE DIVISION OF TEACHING INTO SEMESTERS

Each academic year is divided into two semesters, each worth 30 ECTS credits (European Credit Transfer System). Subjects are grouped into modules (*UE - Unité d'Enseignement*) that require participation in lectures, seminars (TD) and practical exercises (TP).

Lectures

These take place in lecture theatres, often called "amphis", sometimes with as many as 1,000 students present.

Seminars and Practicals

Seminars (TD) and practical exercises (TP) are small-group classes that take place in classrooms or laboratories, exploring lecture topics in greater depth.

THE EUROPEAN CREDIT SYSTEM

Each module is worth a certain number of ECTS credits and a complete semester is worth 30 ECTS credits. Each module (UE) completed within a semester results in the award of ECTS credits. One semester of study is worth 30 credits and an academic year is worth 60 ECTS credits. This is the total volume of work that a student should complete during the course of a year. This system makes it easier for qualifications to be recognised across European countries. It also makes it easier for the credits obtained in one institution to be recognised in another institution in a different European country.

CLASSES

University classes generally start in September and finish around late May to early June before the end of year exams.

GRADING SYSTEM

The grading scale in France goes from 0 at the bottom of the scale to 20. Students must achieve 10/20 to be awarded ECTS credits.

ASSESSMENT

There are two types of university assessment: continuous assessment and examinations. Continuous assessment takes place throughout the year and can take the form of oral or written examinations covering all topics on the syllabus.

Examinations assess students' knowledge in all syllabus topics over the course of a few days. For modules assessed *via* examinations students will be assessed at two points of the year (with examinations held at the end of semester one and end of semester two). Every qualification has its own specific assessment procedures.

RESITS

During the resit period students can retake examinations for which they did not receive a passing grade. First and second semester resits take place at the end of the academic year.

Useful Website

Campus France: www.campusfrance.org/en/French-higher-education

Becoming a Student at Paris 1 Panthéon-Sorbonne

Enrolment

Once you have been accepted to study at Paris 1 Panthéon-Sorbonne you must complete the three enrolment steps:



STUDENT AND CAMPUS LIFE CONTRIBUTION (CVEC)

Exchange students do not have to pay the CVEC fee. However, foreign students who are not part of an exchange programme or are continuing their education at Paris 1 Panthéon-Sorbonne University must pay this contribution before enrolling. The rate of this contribution is €103.

You can obtain your proof of payment in two minutes:

- > Create an account at **MesServices.Etudiant.gouv.fr**
- > Select Paris as your place of study
- > Pay your CVEC contribution
- > Receive your proof of payment and present it to Paris 1 Panthéon-Sorbonne when you enrol.

You are exempt from paying the CVEC contribution if either of the following cases apply to you: you are a refugee who is in receipt of subsidiary protection, an asylum seeker with the right to stay in France, or a French government scholarship holder.

ADMINISTRATIVE ENROLMENT

If you are accepted to take part in an exchange programme, once you are officially nominated, you will receive a link in order to apply. You will remain enrolled at your home university to which you will continue to pay your usual tuition fees. You do not need to pay any tuition fees to Paris 1 Panthéon-Sorbonne.

You will receive by email instructions on how to complete your administrative enrolment on Paris 1 Panthéon-Sorbonne's Primoweb site (for both exchange students and full-degree students). You will receive a pre-enrolment number along with these instructions and a step-by-step tutorial. You will need your pre-enrolment number to access the Primoweb site, as well as your date of birth.

For non-EU nationals, you can apply for a student visa using your enrolment letter if you live abroad, or request a renewal of your residence permit with this letter if you live in France.

Once enrolled you will receive a confirmation printable email and your student number. Keep this number as it will allow you to activate your account on the ENT (virtual learning space) and access the university's online services.



On your ENT account you will find a tab entitled "Pièces Justificatives" where you should upload the documents required to complete your enrolment.

These documents are:

- > Identification document (passport or national identity card)
- > Academic transcript of secondary school qualifications along with a translation (also required for master's courses)
- > Proof of online payment of registration fees, for full degree students (copy of the email)
- > Proof of civil liability insurance, which you can obtain from your relevant insurer (you can upload this later to the ENT).

ACADEMIC ENROLMENT

Once you have finished your administrative enrolment at the university, you must complete your academic enrolment with your academic department, in order to be able to sit your examinations.. Enrolment in language classes (eg. French as a foreign language), sport and cultural activities should be completed through the relevant services: Department of Languages (DDL), Sports and Physical Education Department (UEFAPS) and Student Life Service (PVE).

Additional information for exchange programme students:

Before your departure you must sign your learning agreement that lists the classes you will be taking at Paris 1 Panthéon-Sorbonne, as well as the equivalent classes in your home university. Upon passing these courses you will then be awarded with credits for equivalent classes in order to obtain your final qualification in your home institution. Once you arrive at Paris 1 Panthéon-Sorbonne you must enrol in the classes detailed in your learning agreement. You must take an initial meeting with your international relations delegate teacher upon arrival so that they can check your timetable. Once you have completed this step you must go to the administrative office for each class in order to complete your academic enrolment.

Contacts

Exchange programme mobility:
incoming-exchange@univ-paris1.fr

Non-exchange programme mobility:
incoming-fulldegree@univ-paris1.fr

Enrolment
Telephone helpline:
+33 1 71 25 11 37 (from France and abroad)

Useful Websites

CVEC: cvec.etudiant.gouv.fr

Administrative enrolment:
pantheonsorbonne.fr/inscription/inscription-administrative

Primoweb:
primo.univ-paris1.fr/primo/

Language classes enrolment:
rlang.univ-paris1.fr

Orientation

Every year leading up to the start of semester one in September and the start of the second semester in January, Welcome Days are held for incoming exchange students. These weeks are a chance for students to become better acquainted with the university.



During these events, participants have the opportunity to improve their skills in French as a foreign language (FLE) thanks to classes taught by the department of Languages (DDL). Students are grouped based on a language placement test they take at the beginning of the Welcome Days. Students may also attend university methodology classes for each discipline as well as research method classes offered by the library in order to support students with using the online resources.

At the start of the Welcome Days there is an introductory meeting at which representatives give information about various university associations and services, such as the International Relations Department, the sports services and the Student Life Service.

The Welcome Days finish with a cocktail reception which is a chance for students to meet and get to know each other.

If you would like to participate in Paris 1 Panthéon-Sorbonne's Welcome Days then you must fill out an application form online that will be sent to you prior to your arrival as places are limited. Your offer to study at Paris 1 Panthéon-Sorbonne University does not guarantee a place on these orientation events. Participating in all sessions during the Welcome Days does not lead to the obtention of credits (ECTS).

Contact

international-welcome@univ-paris1.fr

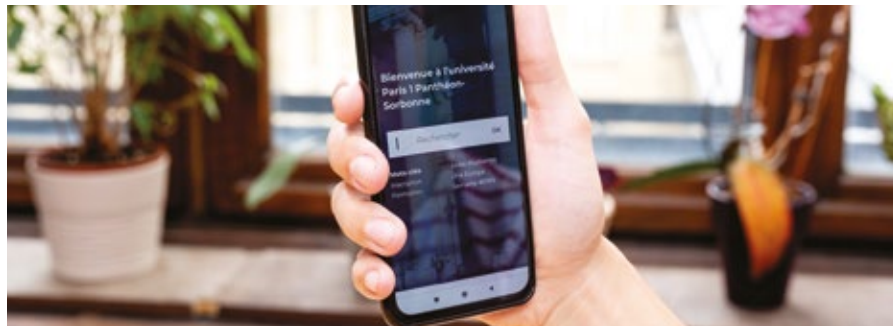
Ressources

IT Services

You will receive your login details to access the university's online resources once you have administratively enrolled. You can activate your Paris 1 Panthéon-Sorbonne account using these details and create a password.

This account allows you to connect to all online university services through a virtual learning environment (ENT), giving you access to:

- | | |
|-------------------------------------|-----------------------------------|
| > Interactive Learning Spaces (EPI) | > the university directory |
| > university email (Webmail) | > online academic resources |
| > personal online storage space | > library catalogues |
| > exam results | > your university eReader account |



DIGITAL LEARNING

Interactive Learning Spaces allow you to access and download resources teachers put online but also to complete academic activities (interactive exercises, homework submission, class forum, etc.). Distance learning is also accessible from the EPI (Panopto virtual lectures and Zoom virtual classes).

PIX

Paris 1 Panthéon-Sorbonne University offers undergraduate students the opportunity to take the Pix certification. This online platform is used to assess and certify digital skills.

WI-FI AND COMPUTER ROOMS

Paris 1 Panthéon-Sorbonne students can make use of two computer rooms upon presentation of a valid student card. These can be found at:

- > Centre Pierre-Mendès-France: room B14.03
- > Centre Sorbonne: room C614

There are two ways to connect to the university wireless network: 'eduroam', which is available from any higher education institution, or 'universite-paris1'.

If you have trouble using Paris 1 Panthéon-Sorbonne's online services please click on the "Assistance" tab within your virtual learning environment account.

Contact

IT support:
assistance-dsiun@univ-paris1.fr

Useful Websites

Complete institutional digital navigation guide: ent.univ-paris1.fr/gun

University Digital Service website:
numerique.pantheonsorbonne.fr

Pix website: pantheonsorbonne.fr/pix

Libraries

The joint library services (SCD) of Paris 1 Panthéon-Sorbonne University include six integrated libraries. Some thirty libraries associated to the SCD and other inter-university libraries are also open to the university's students.



The most popular are the library in the Centre Pierre-Mendès-France (PMF) as well as the 5th arrondissement inter-university libraries: the BIS (Sorbonne inter-university library), the

Cujas library, Sainte-Barbe library and Sainte-Geneviève library.

While first and second year undergraduates tend to use the PMF library, third year undergraduates often use the inter-university libraries. There are also centres reserved for the use of second year master's and doctoral students, which although they are not listed here can be found on the university's website dedicated to libraries.

CONSULTING AND BORROWING DOCUMENTS

The Mikado tool, available from the university's libraries or remotely from the ENT, provides access to the entire range of documents available at Paris 1 Panthéon-Sorbonne University. This includes documents available in the libraries, as well as electronic resources (e-books, articles, etc.), for which Mikado can be used to search

a large part of full-text content. The tool also makes it possible to obtain information on the location and availability of a resource in the library.

Documents that are not in the library catalogue and are available in other university or public libraries in Paris can be sent via interlibrary loan (PEB). The service is only available to members of Paris 1 Panthéon-Sorbonne University (students, teaching staff, administrative staff).

MAIN UNIVERSITY LIBRARIES

The list below is not exhaustive and more specialised libraries exist in each discipline. Access conditions to each library may vary depending on your field and level of study. Check the university's website dedicated to libraries for more information.

Location

Subjects

<p>Bibliothèque Pierre Mendès-France Centre PMF 31, rue Baudricourt 75013 Paris 5th floor (green lifts)</p>	<p>Political science Economics and management Humanities and social sciences Information and communication sciences</p>
<p>Bibliothèque Sainte-Barbe 4, rue Valette 75005 Paris</p>	<p>Law and political science Economics and management Literature and languages Arts, Humanities and social sciences Health</p>
<p>Bibliothèque Sainte-Geneviève 10, place du Panthéon 75005 Paris</p>	<p>Literature Arts Humanities and social sciences Heritage collections</p>
<p>Bibliothèque de l'École des Arts de la Sorbonne Centre Saint-Charles 47, rue des bergers 75015 Paris 2nd floor, room 260 (next to lift)</p>	<p>Fine arts and art sciences</p>

<p>Bibliothèque Michelet Centre Michelet 3, rue Michelet 75006 Paris Mezzanine</p>	<p>History of art Archaeology Photography Film studies</p>
<p>Bibliothèque Jean-Claude Colliard Campus Port-Royal 1, rue de la Glacière 75013 Paris</p>	<p>Law</p>
<p>Bibliothèque Cujas 2, rue Cujas 75005 Paris</p>	<p>Law Economics Political science</p>
<p>Bibliothèque interuniversitaire de la Sorbonne (BIS) Centre Sorbonne 17, rue de la Sorbonne 75005 Paris Entrance through Sorbon gallery</p>	<p>History Philosophy Literature Geography Heritage collections Ancient history</p>
<p>Bibliothèque Ernest-Lavis Centre Sorbonne 17, rue de la Sorbonne 75005 Paris Stairwell C, 3rd floor</p>	<p>History</p>
<p>Bibliothèque d'archéologie et des sciences de l'antiquité MSH Mondes - Bâtiment Ginouvès 21, allée de l'Université 92023 Nanterre Ground floor</p>	<p>Archeology Prehistory and protohistory Ancient and medieval science</p>
<p>Bibliothèque François-Cuzin Centre Sorbonne 17, rue de la Sorbonne 75005 Paris Stairwell C, 1st floor LHS</p>	<p>Philosophy</p>
<p>Bibliothèque de l'Institut de géographie 191, rue Saint Jacques 75005 Paris 2nd floor</p>	<p>Geography</p>
<p>Bibliothèque Jacques-Lagroye Centre Sorbonne 14, rue Cujas 75005 Paris Stairwell K, office H611</p>	<p>Political science</p>

Location

Bibliothèque de l'Institut d'études du développement de la Sorbonne

45 bis, avenue de la Belle Gabrielle
94130 Paris
Building 1, room 025

Subjects

Development Studies

Centre de documentation du CES

Maison des Sciences Économiques (MSE)
106, boulevard de l'Hôpital 75013 Paris
Ground floor

Economics
Applied mathematics

Centre de documentation en histoire de l'art

Galerie Colbert
6, rue des Petits Champs 75002 Paris
1st floor, office 109

History of art

Centre de documentation de l'Institut des sciences sociales du travail

Centre Bourg-la-Reine
16, bd Carnot 92340 Bourg-la-Reine

Sociology
Political science
Education sciences
Law, economics

Contact

Loans service: pretbu@univ-paris1.fr

Useful Websites:

Libraries website:
bibliotheques.pantheonsorbonne.fr

Mikado: mikado.univ-paris1.fr

University Commitments



Disability

In line with its core values, Paris 1 Panthéon-Sorbonne University is committed to welcoming and supporting disabled students. If you have a disability, you can benefit from personalised support, every day by appointment, from the university's Relais handicap. Its team provides individual welcome, information and assistance in dealing with the various university services and finding the most appropriate answers to your needs. The Relais handicap can also help you if you need any adjustments (exam and course arrangements, accessibility, etc.).

Contact

Relais handicap: handi@univ-paris1.fr

Incident Reporting

As part of its safety policy, Paris 1 Panthéon-Sorbonne University has developed a common incident reporting system for all staff and students who are victims or have witnessed situations of gender-based or sexual violence, harassment, discrimination, assault, or other behaviour causing a psychosocial hazard within the university. All reports are submitted to the university's dedicated support unit and remain strictly confidential at every stage of the procedure. They are dealt with on an individual basis so that the victim or witness can be heard and offered appropriate support.

Useful Website

University incident reporting procedure:
p1ps.fr/VSS

Sustainable Development

Throughout the year, the Sustainable Development Service gives all the university's students the opportunity to contribute, either individually or through their clubs and societies, to the various actions carried out by Paris 1 Panthéon-Sorbonne University. Students can take part in the many events, initiatives and workshops launched each year to address this key topic, and join the community of sustainable development ambassadors to keep track of the latest news and help build a sustainable university.

Contact

Sustainable Development

Service:

developpement.durable@univ-paris1.fr



Societies and Cultural Activities

Clubs and Societies

Paris 1 Panthéon-Sorbonne University has many student societies, including cultural societies, sports and subject societies, and union societies. There is a huge choice if you are interested in getting involved in the university's student clubs and societies.



Societies are an excellent way of meeting other students and gaining experience in a variety of fields. If you are interested in student societies you can stay updated with their news and join if you wish.

Some student societies help international students become more integrated at the university by running regular activities organised for participants, including many cultural visits. You are welcome to attend these events all throughout the year, whether or not you are an exchange student, staying for a semester, a year, or more.

Contact

Student Life Service:

sve@univ-paris1.fr

Useful Website:

Webpage on clubs and societies:

www.pantheonsorbonne.fr/vie-etudiante/vie-associative

You can find the full list of Paris 1 Panthéon-Sorbonne clubs and societies along with contacts for these on the university Intranet website.

Paris 1 Panthéon-Sorbonne societies organise events all year round that take place within and outside of the university. The Student Life Service gives information about these events via their Facebook page.

Cultural Activities

The Student Life Service organises various workshops, with something on offer for theatre lovers, as well as those interested in music, writing and radio. It also promotes events organised by student societies. Some workshops may entitle you to a bonus on your average grade. Registrations can be made via the Reservaculture system, which can be accessed from the ENT.

Theatre

Paris 1 Panthéon-Sorbonne University offers several theatre workshops for amateurs and experienced performers alike. They are a wonderful way to begin or continue developing your theatre skills.

You can also receive discounts for theatre tickets when you enrol in theatre workshops in partnership with the Théâtre des Quartiers d'Ivry and the Odéon-Théâtre de l'Europe.

Rehearsals are held for two or three-hour sessions each week, either in university buildings or elsewhere in Paris. Each workshop group puts on a production at the end of the year. Enrolment for annual workshop groups is at the start of the academic year and the number of places is limited. If you are interested in learning about improvisation techniques there is also an English language improvisational theatre group.

Music

The Paris Universities Orchestra and Choir (O.C.U.P.) is open to students from higher education institutions in Paris and the Île-de-France region. It is a great way to share in a passion for music and meet students studying other subjects and from different backgrounds.

The orchestra and choir perform several times a year at concerts involving Parisian and European universities and other prestigious locations.

The orchestra and the choir recruit at the beginning of the academic year and auditions take place in September. You must be an experienced player in order to be recruited within the orchestra. Knowledge of music theory is an advantage when joining the choir however beginners are also welcome.

Photography

Combining theory and practice, the photography workshop offers students an introduction to the aesthetics of contemporary photography, a training in basic shooting techniques and it also addresses the stage of post-production work.

There is no specific equipment required and the sessions take place once a week within the university. The photography workshop is only open to full-year registration and the number of places is limited. Another photography workshop is also available for advanced students.

Writing

Paris 1 Panthéon-Sorbonne offers creative writing workshops, where you can learn how to read your writings and write a complete short story. Enrolment for the workshop is for the whole year and there is a limited number of places.

Radio

Paris 1 Panthéon-Sorbonne University offers a radio workshop in partnership with Radio Campus Paris, the local independent student radio station in the Île-de-France region.

This workshop offers students the chance to discover the world of radio by learning about production and editing techniques. You can also learn how to produce reports and features and to conduct interviews. Over the course of the sessions you will work on an editorial project that will culminate in the joint-production of a programme with a live studio audience and special guests.

Enrolment in the radio workshop takes place at the beginning of each semester and the number of places is limited.

Other Cultural Activities

The university's Student Life Service organises every year, during the second semester, a Short Film Festival. This event is an opportunity for students at the university to show their films to the public and to a panel of academics and industry professionals. Over 10 short films are selected each year to be screened at an awards evening in a Parisian cinema.

There are documentary screenings, conferences, exhibitions and debates organised all year round in various university centres.

The university has also launched a workshop in partnership with the Arab World Institute to discover the arts of the Arab world in several courses.

You can get in touch directly with the Student Life Service and check their Facebook page to learn more about societies, partnerships and cultural events at the university. For more information on the latest workshops available, check the student Intranet.



Useful Websites:

Webpage on cultural activities:
pantheonsorbonne.fr/vie-etudiante/vie-culturelle

Student Life Service:
www.facebook.com/VieEtudianteUnivParis1PanthéonSorbonne

Reservaculture: rculture.univ-paris1.fr

O.C.U.P.: www.ocup.fr

Radio Campus Paris:
www.radiocampusparis.org

Sports

There are many sporting activities at the university that you can participate in for free as part of your university studies or independently in your own time.

SPORTS AND PHYSICAL EDUCATION DEPARTMENT (UEFAPS)

UEFAPS runs a number of activities led by specialised sports and physical education teachers. The teaching team offers more than 60 different activities from beginner to advanced level. You can consult the full list of activities, timetables, and practical information on the UEFAPS website and Intranet. The activities take place in Paris and its suburbs.

Credit-Bearing Courses

Enrolment in a sports activity as part of a training course leads to an assessment with a grade. You can only choose one activity (from beginner to advanced level) as part of credit-bearing courses.

Participation in organised sports activities could qualify you for extra-credit, equating to a maximum of a 0.5 point grade average increase across the semester. You can also choose an optional sports activity as part of a module (UE) of your course of study, and thus obtain ECTS credits.

Please note that the modalities of sports credit-bearing courses may vary according to your level of study and your academic department.

Extracurricular Courses (non Credit-Bearing)

You can also choose from the numerous activities on offer to do sport during your free time. These activities are non credit-bearing and will not be assessed.

Disabled Students

Disabled students can take part in group classes and/or schedule individual sessions to participate in sporting activity as part of the *Parcours Personnalisé d'Éducation Physique et Sportive programme* (PPEPS).

How do I enrol?

You can enrol online via the RéserveSport application. When going to the first course, you must have a valid student card and a French medical certificate less than three months old indicating your fitness to participate in the sports you have chosen.

PARIS 1 SPORTS ASSOCIATION (ASSOCIATION SPORTIVE PARIS 1)

AS Paris 1 is an affiliated member of the *Fédération Française du Sport Universitaire* and coordinates a wide range of sporting competitions at all levels. You can consult the programmes and results on the *Ligue Paris Île-de-France du Sport Universitaire* (LIFSU) website. Competitions generally take place from the beginning of November. You have to be a member of the sports association at the time of the first competition in order to participate.



How do I sign up for AS?

You must complete the form online or at the AS office (Centre PMF - C803).

Check their website for the list of documents you need to provide. Membership fees are payable by cheque or cash.

Contacts

UEFAPS: uefaps@univ-paris1.fr

AS Paris 1: assport@univ-paris1.fr

Useful Websites

UEFAPS: sport.pantheonsorbonne.fr

AS Paris 1: association-sportive.pantheonsorbonne.fr

Reservasport: rsport.univ-paris1.fr

PPEPS: sport.pantheonsorbonne.fr/inclusion

LIFSU: sport-u-iledefrance.com

Eating

There are several Crous eating options located around the university where you can buy a three-course meal for €3.30 (€1 for Crous scholarship students and those in precarious situations) to sit in or take away. There is a six-point menu system, allowing you to choose a main course for three to five points and a starter and dessert for one or two points each. There are many Crous university canteens, *cafés* and take-away vans to choose from.

Please consult the “Restauration” tab on the Crous website to find more information about Crous canteens, such as which is closest to your place of study or which is open latest.

CANTEENS OPEN TO PARIS 1 PANTHÉON-SORBONNE STUDENTS

Bullier	39, avenue Georges Bernanos – 75005 Paris
Châtelet	10, rue Jean Calvin – 75005 Paris
Mabillon	3, rue Mabillon – 75006 Paris
Halle aux Farines	3, esplanade Pierre Vidal Naquet – 75013 Paris
La Barge du Crous de Paris	Quai François Mauriac – 75013 Paris
Cité Internationale	17, boulevard Jourdan – 75014 Paris
Clignancourt	17, rue Francis de Croisset – 75018 Paris
Condorcet	14, cours des Humanités – 93300 Aubervilliers

In addition to the university canteens, cafeterias are available for Paris 1 Panthéon-Sorbonne students in several of its main campuses (centre Pierre-Mendès-France, centre Panthéon, centre René Cassin and centre Saint-Charles).



Useful Websites

Crous: www.crous-paris.fr/se-restaurer

Izly: www.izly.fr

IZLY CONTACTLESS PAYMENT

All Crous canteens work with the Izly contactless payment system.

This system is fast because it's contactless, simple because you can recharge your account online or on the Izly mobile app, and convenient, as you can use it in any Crous restaurant. For students within the *Académie de Paris*, the Izly card is the same card as the student card. To activate the Izly card you just have to make an account online using your Paris 1 Panthéon-Sorbonne email address.

If you have any questions, you can go to one of the *Crous de Paris* university restaurants' counters.



4 ▾

Practical Information

P56 **University Calendar**

P60 **Paris 1 Panthéon-Sorbonne
Locations**

P62 **Acronyms**

P64 **Contacts**

- > International Relations
Department
- > Paris 1 Panthéon-Sorbonne
- > Emergency Numbers

P65 **Check-lists**



University Calendar

2024-2025: Semester one

Monday 16th September - Saturday 26th October: Teaching
 Sunday 27th October - Sunday 3rd November: Autumn Break
 Monday 4th November - Saturday 21st December: Teaching
 Sunday 22nd December - Sunday 5th January: Christmas Holidays
 Monday 6th January - Wednesday 22nd January: Semester One Exams

2024-2025: Semester two


Monday 27th January - Saturday 22nd February: Teaching
 Sunday 23rd February - Sunday 2nd March: Winter Break
 Monday 3rd March - Saturday 12th April: Teaching
 Sunday 13th April - Monday 21st April: Spring Break
 Tuesday 22nd April - Monday 5th May: Teaching
 Monday 12th May - Tuesday 27th May: Semester Two Exams

10th June 2025: publication of exam results on the ENT

RESITS

Monday 16th June - Saturday 5th July: Semester One and Semester Two Resits

Teaching 

Holidays and public holidays 

Exams 

Semester 1

September						
M	T	W	T	F	S	S
						1
2	3	4	5	6	7	8
9	10	11	12	13	14	15
16	17	18	19	20	21	22
23	24	25	26	27	28	29
30						

October						
M	T	W	T	F	S	S
	1	2	3	4	5	6
7	8	9	10	11	12	13
14	15	16	17	18	19	20
21	22	23	24	25	26	27
28	29	30	31			

November						
M	T	W	T	F	S	S
					1	2
					3	
4	5	6	7	8	9	10
11	12	13	14	15	16	17
18	19	20	21	22	23	24
25	26	27	28	29	30	

December						
M	T	W	T	F	S	S
						1
2	3	4	5	6	7	8
9	10	11	12	13	14	15
16	17	18	19	20	21	22
23	24	25	26	27	28	29
30	31					

Semester 2

January

M	T	W	T	F	S	S
		1	2	3	4	5
6	7	8	9	10	11	12
13	14	15	16	17	18	19
20	21	22	23	24	25	26
27	28	29	30	31		

February

M	T	W	T	F	S	S
					1	2
3	4	5	6	7	8	9
10	11	12	13	14	15	16
17	18	19	20	21	22	23
24	25	26	27	28		

May

M	T	W	T	F	S	S
			1	2	3	4
5	6	7	8	9	10	11
12	13	14	15	16	17	18
19	20	21	22	23	24	25
26	27	28	29	30	31	

June

M	T	W	T	F	S	S
						1
2	3	4	5	6	7	8
9	10	11	12	13	14	15
16	17	18	19	20	21	22
23	24	25	26	27	28	29
30						

March

M	T	W	T	F	S	S
					1	2
3	4	5	6	7	8	9
10	11	12	13	14	15	16
17	18	19	20	21	22	23
24	25	26	27	28	29	30
31						

April

M	T	W	T	F	S	S
		1	2	3	4	5
6	7	8	9	10	11	12
13	14	15	16	17	18	19
20	21	22	23	24	25	26
27	28	29	30			

July

M	T	W	T	F	S	S
			1	2	3	4
5	6	7	8	9	10	11
12	13	14	15	16	17	18
19	20	21	22	23	24	25
26	27	28	29	30	31	

PUBLIC HOLIDAYS 2024-2025

- Friday 1st November 2024: All Saints Day
- Monday 11th November 2024: Armistice Day
- Wednesday 25th December 2024: Christmas
- Wednesday 1st January 2025: New Year's Day
- Monday 21st April 2025: Easter Monday
- Thursday 1st May 2025: Labour Day
- Thursday 8th May 2025: Victory in Europe Day
- Thursday 29th May 2025: Ascension Day
- Monday 9th June 2025: Whit Monday
- Monday 14th July 2025: Bastille Day
- Friday 15th August 2025: Assumption Day

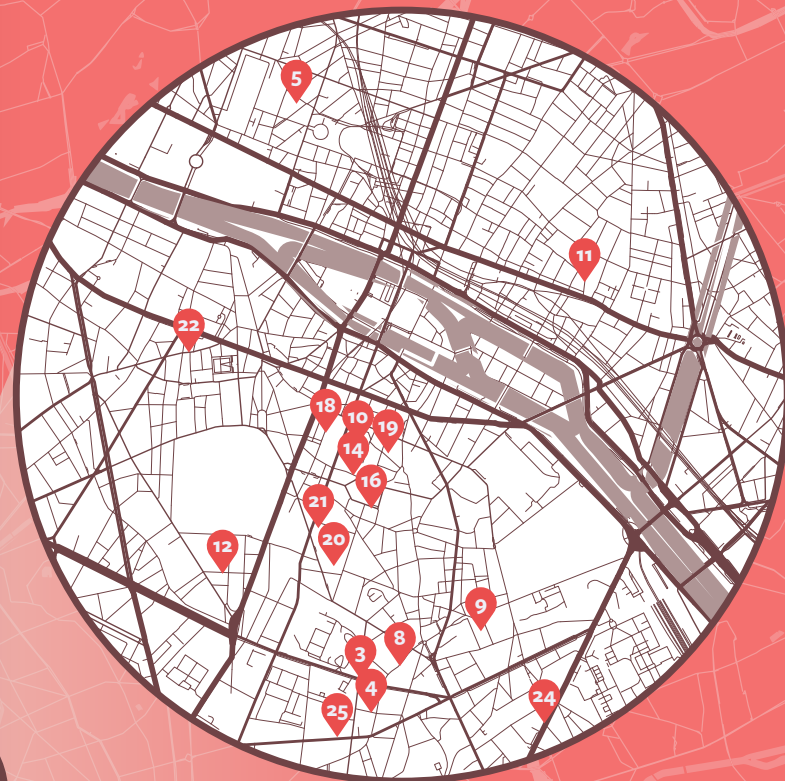
Paris 1 Panthéon-Sorbonne Locations

- 1 > **Campus Condorcet**
8, cours des Humanités
93300 Aubervilliers
- 2 > **Campus Jourdan**
48, boulevard Jourdan
75014 Paris
- 3 > **Campus Port-Royal**
Centre Lourcine
1, rue de la Glacière
75013 Paris
- 4 > **Campus Port-Royal**
Centre René-Cassin
17, rue Saint-Hippolyte
75013 Paris
- 5 > **Carré Colbert (INHA)**
2, rue Vivienne
75002 Paris
- 6 > **Centre Biopark**
8 bis, rue de la Croix Jarry
75013 Paris
- 7 > **Centre de Bourg-la-Reine**
16, boulevard Carnot
92340 Bourg-la-Reine
- 8 > **Centre Broca**
21, rue Broca
75005 Paris
- 9 > **Centre Censier**
13, rue Santeuil
75005 Paris

- 10 > **Centre Cujas**
2, rue Cujas
75005 Paris
- 11 > **Centre Malher**
9, rue Malher
75004 Paris
- 12 > **Centre Michelet**
3, rue Michelet
75006 Paris
- 13 > **Centre de Nogent-sur-Marne**
45 bis, avenue de la Belle Gabrielle
94130 Nogent-sur-Marne
- 14 > **Centre Panthéon**
12, place du Panthéon
75005 Paris
- 15 > **Centre Pierre-Mendès-France**
90, rue de Tolbiac
75013 Paris
- 16 > **Centre rue d'Ulm**
1, rue d'Ulm
75005 Paris
- 17 > **Centre Saint-Charles**
47, rue des Bergers
75015 Paris

- 18 > **Centre Sorbonne**
17, rue de la Sorbonne
75005 Paris
- 19 > **Collège Sainte-Barbe**
4, rue Valette
75005 Paris
- 20 > **Éditions de la Sorbonne**
212, rue Saint-Jacques
75005 Paris
- 21 > **Institut de Géographie**
191, rue Saint-Jacques
75005 Paris

- 22 > **Maison de la Philosophie -
Marin Mersenne**
13, rue du Four
75006 Paris
- 23 > **Maison des Sciences
de l'Homme Mondes**
21, allée de l'université
92000 Nanterre
- 24 > **Maison des Sciences Économiques**
106-112, boulevard de l'Hôpital
75013 Paris
- 25 > **Maison internationale
(International Relations
Department)**
58, boulevard Arago
75013 Paris



Acronyms

ANEF

Administration Numérique pour les Étrangers en France (*Digital Administration for Foreigners in France*)

APL

Aide Personnalisée au Logement (*Government Housing Grant*)

BU

Bibliothèque Universitaire (*University Library*)

CAF

Caisse d'Allocations Familiales (*Family Allocations Office*)

CC

Contrôle Continu (*Continuous Assessment*)

CEAM

Carte Européenne d'Assurance Maladie (*European Health Insurance Card*)

CM

Cours Magistral (*Lecture*)

CPAM

Caisse Primaire d'Assurance Maladie (*Health Care Insurance Fund*)

CROUS

Centre Régional des Œuvres Universitaires et Scolaires (*Regional University Services Centre*)

DAJI

Direction des Affaires Juridiques et Institutionnelles (*Institutional and Legal Affairs Service*)

DELFB

Diplôme d'Études en Langue Française (*Certificate of French Language Studies, levels A1-B2*)

DALF

Diplôme Approfondi de Langue Française (*Certificate of French Language Studies, levels C1-C2*)

DDL

Département Des Langues (*Department of Languages*)

DEVE

Direction des Études et de la Vie Étudiante (*Studies and Student Life Service*)

DIREVAL

Direction de la Recherche et de la Valorisation (*Research Valorisation Service*)

DRI

Direction des Relations Internationales (*International Relations Department*)

DU

Diplôme Universitaire (*Certificate of Higher Education*)

ECTS

European Credit Transfer and Accumulation System

ENT

Environnement Numérique de Travail (*Virtual Learning Environment*)

EPI

Espaces Pédagogiques Interactifs (*Interactive Learning Spaces*)

ESN

Erasmus Student Network

FLE

Français Langue Étrangère (*French as a Foreign Language*)

LMD

Licence Master Doctorat (*Bachelor's, Master's, PhD*)

PMF

Centre Pierre-Mendès-France

RATP

Régie Autonome des Transports Parisiens (*Public Transport Operator in Paris*)

RER

Réseau Express Régional (*Regional Express Network*)

RIB

Relevé d'Identité Bancaire (*Bank account details*)

RU

Restaurant Universitaire (*University Canteen*)

SAMU

Service d'Aide Médicale Urgente (*Emergency Medical Services*)

SCD

Service Commun de Documentation (*Library Service*)

SCUIO

Service Commun Universitaire d'Information et d'Orientation (*University Careers Service*)

SNCF

Société Nationale des Chemins de fer Français (*French National Railway Company*)

SSE

Service de Santé Étudiante (*Student Health Service*)

TCF

Test de Connaissance de Français (*French Language Test*)

TD

Travaux Dirigés (*Seminar*)

TP

Travaux Pratiques (*Practical Exercises*)

TER

Train Express Régional (*Regional Express Train*)

TGV

Train à Grande Vitesse (*High-Speed Rail Service*)

UE

Unité d'Enseignement (*Academic Module*)

UEFAPS

Unité d'Enseignement de Formation aux Activités Physiques et Sportives (*Sports and Physical Education Department*)

UFR

Unité de Formation et de Recherche (*Academic Department*)

VLS-TS

Visa Long Séjour valant Titre de Séjour (*Long-Stay Visa Valid as a Residence Permit*)

Contacts

EMERGENCY NUMBERS

- > Emergency Services: 112
- > Samu (ambulance service): 15
- > Fire service: 18
- > Police: 17
- > SOS Médecins (emergency doctor service): 36 24
- > Poison Control Centre: 01 40 05 48 48

International Relations Department

ADDRESS

Maison Internationale
58 boulevard Arago
75013 Paris

OPENING HOURS

Visit our international website for opening hours of the *Maison internationale* and contact details of the International Relations Department team: p1ps.fr/DRI

Front Desk

international-contact@univ-paris1.fr

Paris 1 Panthéon-Sorbonne

Switchboard

+33 1 44 07 80 00

Enrolment Assistance

+33 1 71 25 11 37
assistance.candidature@univ-paris1.fr

Student Life Service

sve@univ-paris1.fr

Incoming Exchange Mobility

incoming-exchange@univ-paris1.fr

Housing

international-housing@univ-paris1.fr

International Student Welcome

international-welcome@univ-paris1.fr

Incoming Full Degree Mobility

incoming-fulldegree@univ-paris1.fr

Welfare Services

fsdie-social@univ-paris1.fr

Health Services

sse@univ-paris1.fr

Disability Services

handi@univ-paris1.fr

Check-lists

Before you arrive

REMEMBER TO BRING:

- An identification document (+ a birth certificate translated into French for full degree students)
- Your admission letter to Paris 1 Panthéon-Sorbonne University
- A photocopy of your secondary school qualification certificates
- A photocopy of your last qualification certificate (for full degree students)
- A bank document displaying your bank details

TO-DO:

- Apply for a visa in your local French consulate in your country of residence (for non-European students)
- Apply for your European Health Insurance Card (for European students only)
- Remember to take enough cash and/or a bank card with you to cover your initial costs once in France
- For disabled students: remember to bring your medical documents with you, preferably with a French translation

When you arrive

- Validate your VLS-TS online (for non-European students)
- Open a bank account
- Take out a housing insurance policy as soon as you have an address in France
- Register with the CPAM if you are a student without a European Health Insurance Card
- Obtain proof of public liability insurance (you can get this from your insurer, a mutual, or a bank)
- Obtain proof of payment of the CVEC or exemption from having to pay this (for students to whom this applies)
- Proceed to your administrative enrolment, if you have not already done so before your arrival
- Activate your ENT account
- Get in touch with the delegate teacher of your academic department or institute, who is responsible for modifying or validating your learning agreement (for exchange programme students)
- Proceed to your academic enrolment



International Relations Department

58 boulevard Arago – 75013 Paris – France

international.pantheonsorbonne.fr/en